



# 2020

## MEMBER DIRECTORY



YOUR BRIDGE TO THE BRAZILIAN MARKET - SINCE 1953





# DRIVING THE SHIFT

To us at Scania, it is evident that innovation, profitability and sustainability should go hand in hand. On our journey towards becoming the leading provider of sustainable transport systems, we focus on Energy efficiency, Alternative fuels and Electrification, as well as Smart and safe transport. These factors must work in parallel and in combination with each other to create a truly sustainable transport system.

We believe in the strength of cooperation and are convinced that partnership equals leadership.

Together with our customers, and their customers, we are determined to accelerate the shift towards a future of sustainable transport solutions.



Respeite os limites de velocidade



# 2020

## MEMBER DIRECTORY

YOUR BRIDGE TO THE BRAZILIAN MARKET - SINCE 1953

We create  
responsible,  
sustainable growth  
that will benefit  
people and  
the planet



[www.alfalaval.com.br](http://www.alfalaval.com.br)





# INDEX

MESSAGE FROM THE MANAGING DIRECTOR .....7

## SECTION 1

SWEDCHAM ORGANIZATION ..... 8

Board of Directors

Fiscal Council

Advisory Council

Swedcham Team

Partners

Swedcham Committees

Swedcham Representatives

Young Professionals

Swedish Business Climate Survey

The Brazilian Chamber of Commerce - Brazilcham Sweden

Swedcham Organization

Our Business Center

Events 2020

Events by Partners promoted by Swedcham 2020

## SECTION 2

INDIVIDUAL MEMBERS.....28

## SECTION 3

CORPORATE MEMBERS .....38

A woman wearing AR glasses is shown in profile, looking at a futuristic digital interface. The interface features various data visualizations, including a large circular gauge at the top left, a smaller circular gauge below it, and several horizontal bars and charts. The woman is wearing a patterned top. The background is a blurred cityscape.

*Atlas Copco*

## Home of industrial ideas.

Nosso espírito é inovador, nossas ações buscam fazer melhor sempre. Trabalhamos e existimos para ajudar a indústria a criar um mundo melhor, com qualidade de vida, sustentabilidade e produtividade.

[www.atlascopco.com.br](http://www.atlascopco.com.br)



Linkedin



Instagram



Facebook

## A WORD FROM THE MANAGING DIRECTOR



It has been quite a challenge to produce and publish a Member Directory in the worst financial and social crisis in modern times, in Brazil and all over our planet. However, we have received ads and information from all our faithful members which inspired us in the process. We have learned many lessons adapting to the new pandemic reality. São Paulo is not an easy city to travel in so many people have appreciated the possibility of "attending events" from their homes or offices. We are recording many webinars and they are now saved on our website for you to watch. This was yet another project we had had for a long time but was speeded up "thanks to" the Covid-19 crisis. It is really a paradox, but the pandemic has in many ways taken us closer than ever to many members. In the discussions we have with our members we understand that the companies are managing to keep up a good efficiency and productivity also with the staff working from home, but we also hear that many want to go back to the offices as soon as possible. For the Chamber it is good news that the members miss the physical events and meetings, since that is one of the services we offer.

We have been accepted as one of the first Chambers in Brazil, as a member of the *UN Global Compact* – the World's largest corporate sustainability initiative. As a Swedish Chamber it feels natural to support this

great project and to take shared responsibility for achieving a better world.

Other projects this year worth mentioning a little extra are, the *Global Business Climate Survey*, the CSR videos "*the Swedish Footprint*" and the groups for "*experience sharing in pandemic times*". We are extremely happy that the *Team Sweden concept* is still very strong in Brazil and we have a tight cooperation with the other players which are the Embassy, the Consulates and Business Sweden. *CISB - Centro de Inovação Suecia Brasil* is another important partner and since they moved into our building last year, we have seen many synergies.

We hope that this electronic Member Directory always will be accessible on your devices and that you use it as your first source whenever you look for a new service or product.

We are very keen on listening to your ideas and suggestions for the Chamber, both for the short and long run so do not hesitate to enter in contact.

Finally, thanks to all supporting partners that make the Chamber to what it is today: the small but efficient staff, the experienced and heterogeneous Board of Directors and the faithful and encouraging members. **Together we will get through these challenging times and come out stronger than ever!**



# SWEDCHAM ORGANIZATION



## HONORARY MEMBERS

**FIRST HONORARY MEMBER**  
H. M. Queen Silvia of Sweden



## BOARD OF DIRECTORS

### CHAIRMAN



**Sérgio Quiroga da Cunha**  
Independent Consultant

### VICE CHAIRMAN



**Anders Norinder**  
Senior Advisor

### TREASURER



**Stefan Lundkvist**  
Managing Director,  
BM Optimus  
Consultoria Ltda

### LEGAL DIRECTOR



**Juliana G. Meyer Gottardi**  
Founding Partner of  
PNST Law Firm

### ETHICS DIRECTOR



**Daniela Fukino**  
Head of People and  
Culture at Paracel

## DIRECTORS



**Kenneth Cehlin**  
CFO Scania Latin America



**Nils Grafström**  
CEO Paracel



**Luciano Nassif**  
Country Finance Manager,  
ABB



**Malin Håkansson Teles**  
Communications  
Manager, Eggs Design



**Tarcisio Triviño**  
Managing Director Latin  
America & Caribbean  
Importers at Volvo Cars.



**Andreza Rodrigues**  
Communication Manager,  
Tetra Pak



**Alessandra Sellmer**  
Corporate Communications  
Manager – Atlas Copco –  
Latin America



**Marianna Silva**  
Country Manager for Brazil,  
Saab



**Hans Sjögren**  
Strategy Director  
Ericsson



**Olle Widén**  
CEO and Co-Founder  
FinanZero



## FISCAL COUNCIL

**Cyntia Peluso**



Senior Corporate Counsel –  
Atlas Copco

**Daniel Villar Giaculo**



Finance & Administrative  
Director

**Francisco Rodrigues**



Finance and Administration  
Director – Gunnebo Industries/  
The Crosby Group

**Rogério Tatulli**



CIO – Chief Investment  
Officer – Previ-Ericsson



## ADVISORY COUNCIL

THE MEMBERS OF SWEDCHAM'S ADVISORY COUNCIL ARE:

### HONORARY COUNCILLORS

**Swedish Ambassador  
in Brasília**



**Johanna Brismar –  
Skoog**

**Brazilian Ambassador  
in Stockholm**



**Nelson Antônio  
Tabajara de Oliveira**

**Swedish Consul General  
in São Paulo**



**Renato Pacheco**

**Trade Commissioner,  
Business Sweden**



**Andreas Rentner**

**Chairman of the  
Advisory Council**



**Sergio Quiroga da  
Cunha**

### COUNCILLORS

**Paulo Andreoli** – President and CEO MSL group

**Maximiliano Aqueveque** – General Manager Quant Service

**José Luiz Arruda** – Financial Director, Trelleborg Group

**Luiz Buzzo** – President Assa Abloy Brazil

**Carlos Caicedo** – General Manager Epiroc

**Fabricio Campos** – CEO Semcon do Brasil

**Rodrigo Carneiro** – CEO AF do Brasil

**Andre Carrion** – Managing Director Gunnebo Industries





**Agnaldo Colucci** – Country Manager Haldex  
**Ricardo Cons** – President Electrolux Latin America  
**Rafael Diniz** – Managing Director Atos Medical  
**Alessandra Faria** – Managing Director Axis  
**Mauro Favero** – Managing Director Husqvarna do Brasil  
**Eduardo Gondo** – Head of Office Stora Enso Brasil  
**Claudio Goulart** – Chief Representative DNB  
**Fredrik Gustafson** – Head of Market Area Latin America Saab  
**Victor Hernandez** – Managing Director Essity do Brasil  
**Ricardo Hirschbruch** – CEO ABB do Brasil  
**Svante Hjorth** – CEO Southpartner  
**Jens Karlsson** – CEO Swedish Match do Brasil  
**Wilson Lirmann** – President Volvo Group Latin America  
**Adriano Machado** – CEO Höganäs Brasil  
**Luiz Manetti** – CEO Sandvik do Brasil  
**Jean Marincamp** – Vice President Atlas Copco Holding/South America  
**Cleber Martins** – Partner and General Director Brazil – Llorente y Cuenca  
**Marcio Mazon** – President Latam Getinge  
**Juliana Meyer** – Founding Partner – Pacheco Neto Sanden Teisseire Law Firm  
**Luiz Monegatto** – General Manager SSAB South Atlantic  
**Fábio Muniz** – CEO Alfa Laval do Brasil  
**Pupo Neto** – CEO CoSafe Brasil  
**Magnus Pereira** – Vice President Operations Brazil Autoliv  
**Christopher Podgorski** – President Scania Latin America  
**Antonio Ponce** – Vice President Elekta Latin America  
**Marcelo Queiroz** – President Tetra Pak Brazil  
**Claudinei Reche** – President SKF Latin America  
**Christian Meyer de Rezende** – Chief Representative SEB  
**Luis Rezende** – President Volvo Cars Latin America  
**Eduardo Ricotta** – President Ericsson Latam Sul  
**Fernando Rodrigues** – Operations Manager Mentor Supply Chain  
**Rafael Romanini** – Country Manager Brasil Diaverum  
**Carlos Sanchez-Luis** – President AstraZeneca do Brasil  
**Magnus Schöldtz** – Senior Advisor to the Chairman of Investor  
**Mariovaldo Silva** – Managing Director Munters Brasil  
**Marco Stefanini** – CEO and founder – Stefanini  
**Ronaldo Veirano** – Senior Partner Veirano Advogados  
**Olle Widén** – CEO & Co-Founder at FinanZero



## SWEDCHAM TEAM WORKING FOR YOU

**Jonas Lindström**

Managing Director

jonas@swedcham.com.br

**Elaine Soares**

Administrative and Finance Manager

elaine@swedcham.com.br

**Viviane Ringbäck**

Events Manager

eventos@swedcham.com.br

**Gabriella Zulmiro de Oliveira**

Communication's Intern

brazil@swedcham.com.br

**Ana Géssica Borges da Silva**

Office Assistant



## PARTNERS

**MAGAZINE NORDICLIGHT**

**Laura Reid**

Editor

laura@swedcham.com.br

**SWEDISH CLASSES**

Svea Language Idiomas

**David Ringbäck**

Swedish Teacher


svealanguage@gmail.com



## SWEDCHAM COMMITTEES

**Communication and Marketing** - Coordinators: Alessandra Sellmer, Corporate Communications Manager, Atlas Copco Latin America and Andreza Rodrigues, Communications Manager, Tetra Pak

**Finance** - Coordinator: Marcio Zanetti - Country Leader for Brazil at the Economist Intelligence Unit (EIU)



## >SWEDCHAM COMMITTEES

**Human Capital** – Coordinator: Carol Böttcher – Managing Partner of BrainKapital Executive Search & Intercultural Coaching

**Innovation & Sustainability** – Coordinator: Edvaldo Santos, Director of Research, Development and Innovation at Ericsson Latam South

**Legal & Business** – Coordinator: Renato Pacheco Neto – H. Consul General of Sweden, Partner of Pacheco Neto, Sanden, Teisseire Advogados



## SWEDCHAM REPRESENTATIVES

### BELO HORIZONTE – MINAS GERAIS

**Patrícia Coutinho**

Rua Timbiras, 2.670, Santo Agostinho

Belo Horizonte – MG CEP: 30140-063

Mob: +55 31 98477 0534

E-mail: [patricia@azeredocoutinho.com](mailto:patricia@azeredocoutinho.com)

### CURITIBA – PARANÁ

**Otávio Lucchese**

Rua Heitor Stockler de França, 396, sala 1002, 10º andar

Curitiba – PR CEP: 80030-030

Mob: +55 41 9 8828-5672

E-mail: [otavio@swedchamcuritiba.com.br](mailto:otavio@swedchamcuritiba.com.br)

### SALVADOR – BAHIA

**John Brusell**

Avenida Sete de Setembro 2865, un 101

Barra Salvador – BA CEP: 40130-000

E-mail: [brusell@terra.com.br](mailto:brusell@terra.com.br)

### RIO DE JANEIRO

**Björn Salén**

Rio Representative

Rua da Assembleia 10 / gr 3001

Rio de Janeiro – RJ CEP: 20011-901

Phone: +55 21 3233-5710

E-mail: [bjorn@brazilship.com.br](mailto:bjorn@brazilship.com.br)





## YOUNG PROFESSIONALS

*Swedcham Young Professionals (YP)* creates a link between young students and professionals, who have just entered (or are about to enter) the Brazilian workforce, and Swedish companies located in Brazil, and establish possibilities for young professionals to enhance their professional career. Swedcham YP aims to improve the relationship between the major Swedish universities and the Swedish companies in Brazil. Furthermore, it also serves as a social and professional networking platform for young professionals already working at Swedish companies in Brazil. Swedcham YP provides the basic information about arriving in Brazil in order to help newly arrived Swedes to easily integrate in society, and simultaneously help them to interact with the large Swedish community in Brazil. The main event is the Sweden-Brazil Career Fair which unfortunately was canceled due Covid-19. Luckily, we could host Swedcham's last physical event in March, which was a success, with almost one hundred Young Professionals and speakers from ABB, Ericsson and iZettle.

Despite the pandemic we continued to offer special events/webinars for the youngsters, such as one with *Hyper Island*, a Swedish school that provides superior education with modern methods; and another event with Abhilash Ram, engineer and communicator from *Chalmers University of Technology*, talking about living and studying in Sweden. Although our Career Fair was canceled, we supported the *Swedish Institute Fair* in November, the *Study in Sweden Fair*, which counted with more than 20 Swedish universities all united on the same digital platform. The best part of this kind of event is that it has a world-wide range, so literally anyone from anywhere could participate.

We believe that we could manage the new normal very well, but our hopes are high for 2021. We want to host IRL (In Real Life) events, because the exchange of experience in person is so valuable and enriching, especially for people in the beginning of their careers.



## SWEDISH BUSINESS CLIMATE SURVEY

For many years Chambers of Commerce, Business Sweden's foreign offices, and the Embassies around the world have conducted Business Climate Surveys. The purpose of these surveys has been to provide an update on how the Swedish companies in the country perceive the current business climate, with questions spanning from expected economic development to quality of life in the country. Swedish Chambers International (SCI) together with a research team at Business Sweden have been working to improve the way to carry out these Business Climate Surveys within the Team Sweden cooperation. With a coordinated and harmonized approach, the full potential has now been unlocked, facilitating for global comparison as all surveys will be based on the same set of questions. The results will further provide global insights and serve as material for strategic decisions for Swedish firms for their investment and expansion plans.

The new survey was launched between March and April this year with the participation of 22 countries all over the globe. During these unprecedented times, it was decided to include some specific Covid-19 questions, with the assessment of its short and long-term consequences for the business

The survey was completed between April 21 and May 5 and 53 companies took part. This period was already around 8 weeks into the Corona crisis, and the answers reproduce the respondents'

state of mind at that time. The participants were mainly the larger Swedish companies, representing a broad span of industries, with automotive (13%), industrial equipment (13%) and healthcare and pharmaceuticals (11%) as the largest categories.

The global comparative analysis was presented at the World Trade Day in Stockholm on August 25 and you can find the full report on Swedcham's homepage: [www.swedcham.com.br](http://www.swedcham.com.br)

## THE BRAZILIAN CHAMBER OF COMMERCE – BRAZILCHAM SWEDEN

The Brazilian Chamber of Commerce in Sweden (Brazilcham) is a non-profit organization, founded in 2006 as a sister chamber to Swedcham in Brazil. It is funded by member's contributions and revenues generated from a number of activities and projects organized and run by the Chamber. Our mission is to promote and develop bilateral links between Brazil and Sweden.

**Hugo Oljemark, COB** - [hugo@brazilcham.se](mailto:hugo@brazilcham.se) Cel: +46 (0) 72-241 1260

**Elisa Sohlman, CEO** - [elisa@brazilcham.se](mailto:elisa@brazilcham.se) Cel: +46 (0)73-5841811

Adress: Jakobs torg 3, 111 52 Stockholm, c/o Törngren Magnell

## HUSQVARNA AUTOMOWER®

**The robotic lawn mower handles your garden  
24 hours a day x 7 days a week, with perfect results.**

WORLD  
LEADER IN  
ROBOTIC  
MOWER



Equipments for green areas maintenance with complete and high technology solutions, that give you more efficiency and productivity.

[www.husqvarna.com.br](http://www.husqvarna.com.br)



TECNOLOGIA

# Gripen Brasileiro:

Resultado de uma colaboração real



## O Gripen E está no Brasil para dar continuidade ao programa de ensaios em voo

O avançado caça multimiçsão é um projeto estratégico da Força Aérea Brasileira e traz em seu DNA a colaboração real entre o Brasil e a Suécia que, por conta de uma ampla transferência de tecnologia, está possibilitando que a indústria de defesa nacional seja elevada a um patamar ainda mais alto.

Leia mais em [saab.com/br](http://saab.com/br)



**SAAB**





# CUIDAR DO PRESENTE É PROTEGER O FUTURO.

Estar em casa é uma oportunidade para cuidarmos de nós mesmos e do nosso planeta, porque o melhor para todos começa em cada um. Separar corretamente os resíduos que geramos é um hábito capaz de transformar o mundo em que vivemos.

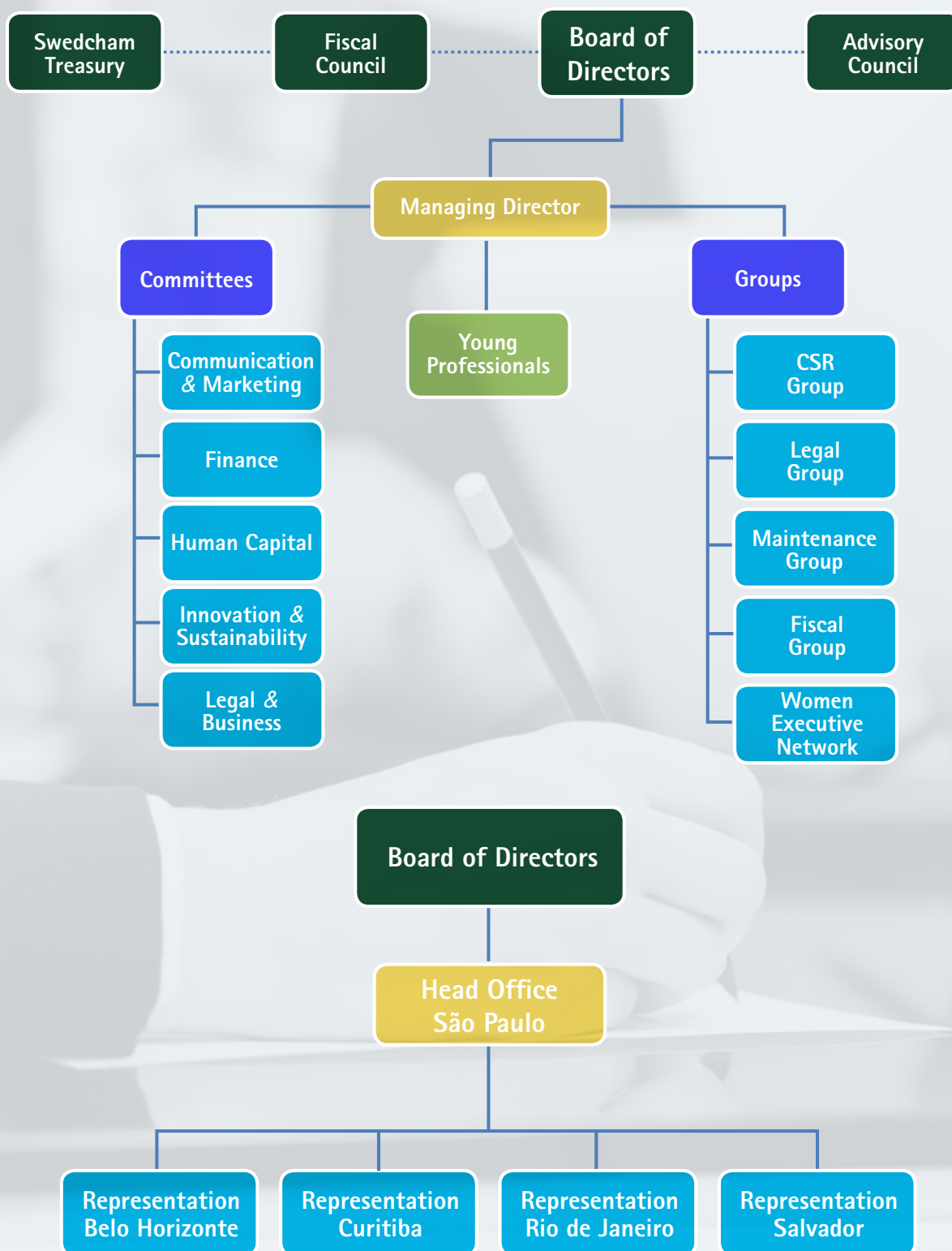
**Faça a sua parte e colabore com a reciclagem das embalagens.**



EU SEPARO, VOCÊ SEPARA,  
NÓS RECICLAMOS.



# SWEDCHAM ORGANIZATION



# OUR BUSINESS CENTER

Swedcham Business Center offers reasonable prices for the following modern facilities at our premises:

## THEATER

**28 m<sup>2</sup>**

20 chairs, Wi-Fi and cable access to the internet, integrated sound system, projector and big screen. For presentations, courses and speeches, the Theater offers accommodations for up to 20 people, when seated, and offers all the necessary equipment.

## MEETING ROOM

**22 m<sup>2</sup>**

08 chairs, 1 table with plugs and cable access. Integrated sound system, projector and big screen, Wi-Fi and cable internet access.

## WORKSTATIONS

**9 m<sup>2</sup>**

- 1 table with plug and cable access.
- Wi-Fi and cable internet access
- Telephone and Fax access

You can rent per hour, day or full time

## COMBINATION

**95 m<sup>2</sup>**

Three combined rooms. Ideal for presentations, courses and speeches, the combination area, which combines the Lounge, Theater and the Videoconference Room, is an auditorium for up to 50 people seated.







## FEBRUARY

- 05 *As relações entre redes sociais e saúde mental, avaliando questões sobre ansiedade, consumo compulsivo e depressão* – Thiago Costa/FAAP e Beatriz Menezes/MindMiners
- 14 Almoço de Networking – Maremonti Jardins
- 17 Joint event – Swedcham and NBCC – *O que esperar do Brasil 2020?* Jornalista Augusto Nunes

## MARCH

- 05 Swedish *Ärtsoppa och Punsch* at the Scandinavian Church
- 12 Comitê de Capital Humano – *Negócios 4.0 e as demandas para a Gestão de Pessoas* – Daniel Jardim
- 12 Kickoff event *Young Professionals – As Gerações, a tecnologia e o propósito do trabalho* – Raphael Haddad/ABB, Marcelo Goldstein/Ericsson e Maria Oldham/iZettle
- 30 Covid-19 experience sharing – Legal & Business Group

## APRIL

- 02 Covid-19 experience sharing – HR Group
- 03 Covid-19 experience sharing – Communication & Marketing Group –

*Comunicação em tempos de crise* – Ciro Dias Reis/Imagem Corporativa

- 07 Covid-19 experience sharing – Legal & Business Group
- 14 Covid-19 experience sharing – Communication & Marketing Group. *Talent Management* – Adélia Chagas, Andrea Lie Iwamizu e Diego Olavarria da LLYC – Llorente & Cuenca
- 14 Covid-19 experience sharing – Legal & Business Group
- 15 *Impactos da Pandemia do Covid-19 no cenário político e econômico da América Latina* – Ricardo Sennes e Ricardo Mendes – Prospectiva
- 17 Covid-19 experience sharing – HR Group
- 22 Covid-19 experience sharing – Legal & Business Group
- 23 Annual General Assembly
- 24 Launch of new Fiscal Group
- 29 Communication Group and HR Group: joint seminar – *Home to Office* – Paulo Andreoli, Dirceu Barbano e Mônica Gorgulho

## MAY

- 4 Fiscal and Legal Groups – *Relações de trabalho em tempos de crise* – Dr. Pedro Capanema Lundgren
- 5 *Uma conversa com Caio Blinder* – Manhattan Connection





- 7 *Mulheres e Pandemia: os agravantes de desigualdades, os catalisadores de mudanças* – Embaixadora Johanna Brismar-Skoog e Nana Lima/Think Olga
- 14 *From offline to online* – A conversation with the Swedcham Board of Directors
- 18 Legal and Business Committee – *Antitruste em tempos de pandemia* – Celso Fernandes Campilongo
- 19 HR Committee – *Responsabilidade Humanística: uma nova proposta de humanização para o mundo corporativo* – Dante Gallian e Alexandre Seraphim
- 21 *O modelo sueco visto com olhos brasileiros* – Claudia Wallin
- 27 Fiscal Group – *Gestão de pessoas a distância* – Ricardo Guimaraes/Electrolux, Eduardo Silvestre/SKF, Augusto Flores/Volvo
- 28 *Home office/Teletrabalho – Os cuidados a serem tomados em época de Cyber Ataques* – Heliezer Viana e Eduardo Damasceno/Mazars

## JUNE

- 04 Communications Committee Experience Sharing
- 04 Legal and Business Committee Experience Sharing
- 05 HR Committee Experience Sharing
- 10 *As ações desenvolvidas no âmbito municipal*

*de combate à Covid-19* – Luiz Alvaro Salles Aguiar de Menezes – Secretário de Relações Internacionais da Prefeitura de São Paulo.

- 16 *Responsabilidade civil do empregador com a pandemia e programação de retorno ao trabalho* – Luiz Calixto Sandes, Kincaid | Mendes Vianna Advogados
- 17 Advisory Council meeting with Ambassador Johanna Brismar-Skoog. Guest speaker Ronaldo Lemos – *Brazil and the new reality of digitalization*

## JULY

- 01 *A corrida contra o tempo para a vacina mais esperada!* – Maria Augusta Bernardini e Jorge Mazzei/Astra Zeneca.
- 08 *Ações emergenciais do BNDES no combate à crise e novas linhas de financiamento* – Gabriel Lourenço Gomes e Bruna Cassoti/BNDES
- 16 Legal Committee – *“Amici Curiae” em casos pendentes nos tribunais superiores em matéria de citação de parte estrangeiro* – Ronaldo Veirano e Luiz Guilherme Moraes Rego Migliora – Veirano Advogados.

## AUGUST

- 06 Grupo de Manutenção – SKF, Moura, BMO e Micropower



12 *Responsabilidade social corporativa (CSR) – benefícios e desafios e incentivos fiscais para tanto* – Joint Event com NBCC, Yara, Statkraft, SKF, Imagem Corporativa e CARF

13 *A aceleração da digitalização na era 5G* – Hans Sjögren, Edvaldo Santos/Ericsson, Urgel Augustin/Similarweb, Jean Saaghard/Banco BEXS

20 *Como aumentar vendas com Seguro de Crédito em épocas de COVID-19* – Phillip Krinker/CredRisk Seguros

25 World Trade Day – Launch of Global Business Climate Report

## SEPTEMBER

01 *Como fica o mundo dos eventos em tempos de COVID-19? Tendências e inovações em eventos digitais Et híbridos* – Andrea Leal

10 *Conheça a Suécia por outros ângulos* – Roberta Perez – Nordic Ways

17 HR Committee – Joint event com Dutcham – Global Mobility – *desafios, tendências e "Human Touch"* – Patricia Tavares/Unilever

## OCTOBER

06 *How to Optimize your High-Performance Leadership* – Rufus Wiena

07 Legal Group – LGPD – *Situação atual das empresas Suecas no Brasil.*

15 Swedcham Young Professionals – *Hack the culture* – HYPER ISLAND

22 *Living, Studying and Working in Sweden* – Abhilash Ram/Chalmers University of Technology

## NOVEMBER

12 Innovation Weeks – *O Impacto da liderança na transformação digital* – Nils Radsak/Audi, Mauro Favero/Husqvarna e Adriano Machado/Höganäs

17 Innovation Weeks – *Sustainable Innovation* – Edvaldo Santos e Maria Cristina Sellman/Ericsson

18 Innovation Weeks – *Revolução digital no mercado de Fintechs* – Luiz Henrique Didier Jr/BEXS e Olle Widén/FinanZero

19 Innovation Weeks – *Inovar é co-criar* – Valéria Michel e Julia Sotera/Tetra Pak

24 *A convergência brasileira às regras de Transfer Pricing da OCDE: impactos diretos e indiretos na tributação das multinacionais* – Ciro Soriano de Oliveira e Cristiano Ruschmann/Bratax



# EVENTS BY PARTNERS PROMOTED BY SWEDCHAM 2020

## APRIL

- 30** *Covid-19 and Its impact on Latam health systems* - The Economist Intelligence Unit

## MAY

- 13** *How Can Sweden prepare for post-corona times?* - Stockholm Chamber of Commerce
- 22** *SKF Fórum* - SKF, Gerdau, Suzano

## JUN

- 13** *Study in Sweden Virtual Fair* - Swedish Institute
- 25** *Coronavirus, protests and Trump's re-election chances* - The Economist Intelligence Unit

## AUG

- 25** *World Trade Day- Launch of Global Business Climate Report* - Swedish Chambers International

## SEPTEMBER

- 09** *Action4Climate High-Level Talk* - UN Global Compact and Scania
- 24** *Sweden Brazil Innovation Initiative - Focus on IPR* - RISE
- 29** *Conexão Tech: Houston - Gestão em ação!* - GS1

## OCTOBER

- 08** *Future Leaders* - LLYC - LLORENTE & CUENCA
- 19** *Sustainable Talks* - Scania
- 22** *Digital Sweden-Brazil Matchmaking event* - RISE - EEN - CISB

## NOVEMBER

- 07** *Study in Sweden Virtual Fair* - Swedish Institute
- 09 > 19** *Innovation Weeks* - Embassy, Consulates, Business Sweden, CISB
- 18** *Scandinavian Day* - Imagem Corporativa



## Máquina de Cuidar Electrolux (LPE16)

Exclusiva Tecnologia Jatos Poderosos:  
Lava profundamente, cuida perfeitamente.



<sup>1</sup> Até 100% de diluição  
do sabão e do amaciante



<sup>2</sup> 50% menos desgaste



<sup>3</sup> 35% menos  
desbotamento



<sup>4</sup> Economiza até 50L  
de água

**Disclaimers Finais:** 1 – **Jet & Clean:** Conforme testes internos comparativos da Electrolux com o modelo LT10B que não possui Jet&Clean vs. LAC11 que possui o sistema Jet&Clean, considerando a distribuição de insumos líquidos na carga localizada no fundo do cesto após o ciclo de lavagem. Esta avaliação foi realizada considerando a diluição de amaciante líquido (150ml) com 8kg de carga padrão e com pressão de água de 240kPa. Condição próxima à perfeita diluição, com área atingida pelo amaciante de 99,99% e desvio padrão 0,01. 2 – **Desgaste (50% menos desgaste):** Considerando nível médio de água, com ativação da função "Perfect Wash" no programa Normal, comparada com a LAC16. Resultado obtido através de procedimentos internos da Electrolux, baseados em normas padrões para teste de desgaste de tecidos normalizados. 3 – **Desbotamento (35% menos desbotamento):** Resultado obtido através de procedimentos internos da Electrolux, baseados em normas padrões para teste de desbotamento de tecidos normalizados de coloração vermelha. 4 – **Economiza até 50L de água:** Considerando a ativação da função "Perfect Wash" no programa Normal, comparada com a LAC16.





WE  
SUPPLY  
THE  
WORLD

We are a global supplier of integrated solutions in supply chain management, print & packaging and e-commerce. In total we are close to 7,000 employees and operates in some 20 countries on four continents. Our most important markets are China, Germany, Singapore, Sweden, the United Kingdom and the USA. Our major customers are active in the branches Automotive, Electronics, Fashion & Lifestyle, Industrial and Health Care & Life Science.

[WWW.ELANDERS.COM](http://WWW.ELANDERS.COM)



LGI  
Made in Quality

 elanders

MEMBERS OF ELANDERS GROUP

Elanders Brazil - Av. Ferraz Alvim, 832 - Diadema - SP  
Phone: +55113195 3400 Fax: +55 3195 3420 [orcamento@elanders.com](mailto:orcamento@elanders.com)

## SPECIAL MEMBERS

### GOLD MEMBERS



Alfa Laval is a leading global provider of first-rate products in the areas of heat transfer, separation and fluid handling to help enhance the productivity and competitiveness of its customers in various industries worldwide, mainly in the energy, food and marine markets.



AstraZeneca is a science-led biopharmaceutical company that focuses on the discovery and development of medicines for the treatment of Oncology, Cardiovascular, Renal & Metabolism and Respiratory diseases, with operations in more than 100 countries.



Atlas Copco is a world-leading provider of sustainable productivity solutions. The Group serves customers through its innovative compressors, vacuum solutions, generators, pumps, power tools and assembly systems. Atlas Copco develops products and services focused on productivity, energy efficiency, safety and ergonomics.



Electrolux shapes living for the better by reinventing taste, care and wellbeing experiences, making life more enjoyable and sustainable for millions of people. As a leading global appliance company, we place the consumer at the heart of everything we do.



Mentor Media is a global supplier of integrated solutions in the areas supply chain management, print & packaging and e-commerce. The Group operates in more than 18 countries on four continents.



Saab serves the global market with world-leading products, services and solutions from military defence to civil security. With operations on every continent, Saab continuously develops, adapts and improves new technology to meet customers' changing needs. Of its total annual sales about 25 per cent are re-invested in research and development.



A worldwide reference in sustainable transport solutions, the company has a simple philosophy: every innovation it introduces, every little change it makes, must have a real effect for its customers and at the same time create value for its employees and society. That's how we do it!



This leading bearing and seal maker is focused on helping its customers achieve even more success in their business by delivering a full offer around the rotating shaft, where the bearing is the core component, complementing with technologies such as sealing, lubrication and condition monitoring.



Stora Enso is a leading provider of renewable solutions in packaging, biomaterials (wood pulp and bio-chemicals), wooden constructions and paper on global markets. Our aim is to replace fossil-based materials by innovating and developing new products and services based on wood and other renewable materials.



The world's number one food processing and packaging solutions company works closely with its customers and suppliers, providing safe, innovative and environmentally sound products that meet the needs of hundreds of millions of people around the world.



Since 1927, Volvo Cars' Swedish heritage and human-centric focus have shaped who they are—passionate about helping people stay safe and enjoy their journeys. And the urge to make people's lives better has led the company to create many innovations and technological advances, and it will continue to do so.

## SPECIAL MEMBERS

### SILVER MEMBERS

**ABB**

ASSA ABLOY

**Atos**  
Breathing-Speaking-Living

**Autoliv**

**BUSINESS SWEDEN**  
THE SWEDISH TRADE & INVEST COUNCIL

**DNB**

**ERICSSON**

**essity**

**Höganäs**

**Husqvarna**

**investor**

**Munters**  
Your Perfect Climate

PN  
ST Pacheco Neto  
Sanden Teisseire  
Advogados

**SANDVIK**

**SEB**

**VEIRANO**  
ADVOGADOS

**VOLVO**

### BRONZE MEMBERS



**AXIS**  
COMMUNICATIONS

**CoSafe**

**DIAVERUM**

**Elektro**

**Epiroc**

**FinanZero**

**GETINGE**

**GUNNEBO**  
Industries

**Haldex**  
Innovative Vehicle Solutions

**LLYC**

**MSL**

**Nordea**

**QUANT**

**SEMCON**

**Southpartner**

**SSAB**

**stefanini**  
GROUP

**stefanini**  
GROUP

**Swedish Match**

**TRELLEBORG**

# INDIVIDUAL MEMBERS





**ADRIANE SIMIS**

Phone: +55 11 9 8136-9027

E-mail: [adrianesimis@gmail.com](mailto:adrianesimis@gmail.com)

Linkedin: Adriane Simis

Business Process and Integration Manager, Focus Têxtil

**ANA LUCIA DE CARVALHO PAGANO**

São José dos Campos - SP

Phone: +55 12 9 99726-1855

E-mail: [ana.nefro@gmail.com](mailto:ana.nefro@gmail.com)

Doctor

**ANDERS JOHANSSON**

Phone: +46 (0)70 479 4497

E-mail: [anders.johansson@sg-wire.com](mailto:anders.johansson@sg-wire.com)

Sales Manager Suzuki Garphyttan AB

**ANDERS PETTERSSON**

São Paulo - SP CEP: 04514-040

Phone: +55 11 9 9185-1449

E-mail: [a.pettersson@uol.com.br](mailto:a.pettersson@uol.com.br)

Magnum Opus Consultoria

**BJÖRN SALÉN**

Rua da Assembleia, 10, Sl. 3001

Rio de Janeiro - RJ CEP: 20011-901

Phone: +55 21 3233-5710

E-mail: [bjorn@brazilship.com.br](mailto:bjorn@brazilship.com.br)

Partner Brazilship/Scanbrasil

Comércio Marítimo Ltda.

**CARLOS CALDERON SUND**

São Paulo - SP

Phone: +55 11 9 8983-0300

E-mail: [carlos@evinhosdaespanha.com](mailto:carlos@evinhosdaespanha.com)

Founder Carl J Sund & evinhosdaespanha

**CHRISTER MANHUSEN**

E-mail: [christermanhusen@hotmail.com](mailto:christermanhusen@hotmail.com)

Former ambassador to Brazil and former chairman of Swedcham

**CHRISTIAN EIDER**

Phone: +55 11 9 8782-7433  
E-mail: c\_eider@hotmail.com  
Team leader @ Kambi Sports Solutions

**CHRISTIAN LINDBLAD**

Rua Padre João Manuel, 596  
São Paulo – SP CEP: 01411-000  
E-mail: christianlindblad@hotmail.com  
Corporate Banking

**CLAUDIO CARVALHO DA ROCHA**

Rua Oscar Freire, 1811  
Phone: +55 11 9 8218-7093  
E-mail: claudiornm@gmail.com  
International Affairs Analyst

**CRIS FERNANDEZ**

Booking.com  
Alameda Santos, 960, 8º e 9º andar  
Jardim Paulista- SP CEP: 01418-100  
Phone: + 55 11 9 9488-2444  
E-mail: Cris.fernandez@booking.com  
Human Resources Manager Latin America

**CRISTINA SUPPLY MENDES GONÇALVES**

Rua Tatuí, 95, apto. 121  
São Paulo – SP CEP: 01409-010  
Phone: +55 11 3088-9957  
E-mail: suplycrismg@terra.com.br

**DANIEL VILLAR GIACULO**

Rua Embaixador Raul Garcia, 150, apto. 94  
São Paulo – SP CEP: 04127-010  
Phone: +55 11 3638-7000/ +55 11 9 8224-9213  
E-mail: dgiaculo@yahoo.com.br  
LinkedIn: Daniel Villar  
Administrator

**DANIELA BERBERT FUKINO**

Phone: + 55 11 9 8501-0058  
E-mail: daniela.fukino@paracel.com.py  
Paracel – Head People & Culture

**FELIPE OLIVA ADAIME**

Phone: +55 11 9 4111-5222  
E-mail: phillipeoliva@yahoo.com  
LinkedIn: pub/felipe-oliva/29/658/32b/  
Sales Executive looking for new opportunities

**FERNANDA SCHIMIDT**

E-mail: frndschmidt@gmail.com  
Editor at Ecoa UOL

**FLÁVIO CESAR DE CARVALHO BASTOS**

Rua Ernane Pires de Melo, 42, apto.1101  
São Domingos Niterói- RJ  
Phone +55 21 9 8194-4462  
E-mail: bastosflavio138@gmail.com  
Public Manager judicial expert and  
Documentoscopy expert

**GEORGE OSBORN**

Rua Conde D'eu, 173  
São Paulo – SP CEP: 04738-010  
Phone: +55 11 9 9982-2469  
E-mail: georgerosborn@gmail.com  
Board member – Boxit Armários Inteligentes

**HELENA BACKLUND PALM**

São Paulo – SP  
E-mail: helenabacklund@gmail.com

**IVETE RIZZATO**

Phone: +55 11 9 9928-3873  
E-mail: ir.assessoria@outlook.com  
Administrator, Psychologist, Finance and  
HR Specialist

**JANICE PETERSEN MEISTER**

Phone: +55 41 9 9923-9676  
E-mail: janice@suecia-brasil.com.br  
Swedish Courses Curitiba – PR

**JOÃO HENRIQUE BOTELHO**

Rua Visconde de Taunay, 507, apto. 102  
São Paulo – SP CEP: 04726-010  
Phone: +55 11 9 9426- 7717  
E-mail: joah.botelho@gmail.com  
joao.botelho@henbak.com.br  
www.henbak.com.br  
Business Consultant

**JOHAN STERN**

São Paulo – SP  
Phone: +55 11 9 6989-7553  
E-mail: sternjohan@yahoo.com

# Sustainable Economy SKF

**For over 100 years, we have made transparency, efficiency and competitiveness a reality within our work environment.**

We believe that success comes from the union of the social, the environment and the economy in search of the transformation of lives.

Thinking about the health of the planet and a perennial environment for all people, we have signed into a new sustainable commitment: by 2030, all of our factories will be carbon neutral.

We renew ourselves daily to create our business models and offer new solutions to our customers, suppliers and partners.

We will continue to exist and transform to ensure the maintenance of a world of reliable rotation.



**JOHN MULLER CARIOBA**

Rua Marechal Bina Machado, 184  
São Paulo – SP CEP: 04663-120  
Mobile: +55 11 9 8208-8116  
Phone: +55 11 5546-0223  
E-mail: johncarioba@gmail.com  
Partner- Global Advisors  
Financial Advisor

**LARS BJÖRKSTRÖM**

Phone: +55 11 2164-7121 /mob +55 11 9 9919-9674  
E-mail: lars@acecoti.com  
Aceco TI S.A.

**LARS HUGERTH**

Rua Emboação, 16  
São Paulo – SP CEP: 04118-080  
Phone: +55 11 5549-1044  
E-mail: hugerth@terra.com.br  
Property Management

**LARS STAFFAN WESTERLUND**

São Paulo – SP  
Independent Consultant in the areas of Project  
Management and Project Financing

**LINGELE MARIA FERNANDES CAMPOS**

**MAGNUS ÅKE GIDLUND**

Rua Mourato Coelho, 716, apto.204  
São Paulo – SP CEP: 05417-001  
Phone: +55 11 9 9277-6767  
E-mail: gidlundm@usp.br  
Professor at University of São Paulo

**MAGNUS ANSEKLEV**

Phone/WhatsApp: +55 11 9 9937- 5255  
E-mail: magnus.anseklev@hotmail.com  
Skype: magnusanseklev  
AEI Consultoria, CEO and owner

**MARIA EMILIA DE LIMA LEME**

Phone: +55 11 9 9601-5673  
E-mail: mariaemilialeme@outlook.com  
Job Hunter

**MICHELLE SUELLY TENORIO DE BARROS**

LinkedIn: michellestbarros  
E-mail: michelle.mstb@gmail.com  
Air Force Officer (Retired)

**NICOLAS BARRERA**

Phone: +55 11 3841-9044  
São Paulo – SP  
CEO – Vecto Mobile

**NILS BONDE**

São Paulo – SP Brasil  
E-mail: nils.bonde42@gmail.com

**NILS ERIK NERBACK**

Rua São Valentim, 60  
São Paulo – SP CEP: 03446-040  
Phone: +55 11 9 9970-2122

**NILS GRAFSTRÖM**

Rua Jesuíno Arruda, 131, 13º. andar  
São Paulo – SP CEP: 04532-080  
Phone: +55 11 9 8105-2579  
E-mail: grafstrom.nils@gmail.com  
CEO Paracel S.A. Paraguay

**PAULA MONTEIRO CHUNDO**

Rua Itacema, 239, apto. 51  
São Paulo – SP Brazil  
Phone: + 55 11 9 9932-0199  
E-mail: paula@chundoadv.com.br  
Attorney at Law – founder of Chundo Advogados

**PAULO DE ALMEIDA BARROS**

Rua João Moura, 680 / 144  
São Paulo – SP CEP: 05412-001  
E-mail: almidabarros@uol.com.br  
Consultant of PAB Consultoria Empresarial

**PEDRO LOPES RIBEIRO**

Av. Paulista, 1765, 7º, cj. 72  
Bela Vista São Paulo – SP CEP: Cep 01311-200  
Phone: +55 11 2936-2660  
E-mail: contact@slidelog.com.br  
Business owner



Connecting people and things  
is more important than ever

Thankfully, that's  
our specialty.

And, when we combine security,  
connectivity and innovation,  
we unite people, we support  
sustainable development and  
we transform the society.

5G



The 5G switch made easy.



[ericsson.com/5g](https://ericsson.com/5g)

### PETER HULTÉN

Al. Cores da Mata, 1973, apto. 91 C, Tamboré  
Santana de Parnaíba – SP CEP: 06543-003  
Phone: +55 11 2424-8362 / +55 11 9 8244-0592  
E-mail: [peternhulten@gmail.com](mailto:peternhulten@gmail.com)  
Skype: peter\_n\_h

### RAPHAEL ANDRADE SILVA

Avenida Wladimir Meirelles Ferreira, 1.525, Sala 313  
Ribeirão Preto-SP CEP: 14021-630  
E-mail: [raphael@andradechamas.com.br](mailto:raphael@andradechamas.com.br)  
Partner, Head of Corporate/M&A

### ROBERTO MARTINHO

Rua Oscar Freire, 379, cj. 121  
São Paulo – SP CEP: 01426-001  
Phone: +55 11 3066-2589 | Mob: +55 11 9 7695-7432  
E-mail: [roberto.martinho@nordea.com](mailto:roberto.martinho@nordea.com)  
Managing Director Nordea

### SERGIO QUIROGA DA CUNHA

Rua Pio IV, 271  
Phone: +55 11 9 8111-6435  
E-mail: [sergio.quiroga@cavaconsultoria.com](mailto:sergio.quiroga@cavaconsultoria.com)  
Chairman Swedcham and NED in several companies.

### SERGIO XAVIER FEROLLA

Rua Barão de Cocais, 59  
São José dos Campos – SP CEP: 12242-042  
Phone: +55 12 3941-3814 / Mob: +55 12 9 8142-8447  
Military, Aviator and Engineer

### STAFFAN MÅRTENDAL

Avenida Suécia, 570  
Rio Claro – SP CEP: 13505-690  
Phone: + 55 19 3535-6401/ +55 19 9 8128-0980  
E-mail: [staffan@aldoro.com.br](mailto:staffan@aldoro.com.br)  
Managing Director

### STEFAN MOCKAITIS

Rua Mateus Grou, 314, apto. 91  
Pinheiros São Paulo CEP: 05415-040  
Phone: + 55 11 9 9575-6655  
E-mail: [stefanmock@gmail.com](mailto:stefanmock@gmail.com)  
Linkedin: <https://www.linkedin.com/in/stefan-mockaitis-32432b38>

### SYLVIO DE FRANCO CARNEIRO

Avenida 9 de Julho, 5593, cj. 63  
São Paulo – SP CEP: 01407-913  
Phone: +55 11 3078-1077  
E-mail: [sylvio.carneiro@ekmangroup.com](mailto:sylvio.carneiro@ekmangroup.com)  
Woodpulp and Paper Trader  
Ekman do Brasil Comercial Ltda

### THOR UBIRAJARA DE ALENCAR NAAS

1830 MacMillan Park Drive  
Fort Mill, SC 29707  
Phone: +1 704 583 3971 /+1 803 207 3004  
E-mail: [thor.naas@conti-na.com](mailto:thor.naas@conti-na.com)  
Site: [www.continentaltire.com](http://www.continentaltire.com)  
Controller – Logistics US & Canada

### TIM ALEXANDER KVALEM

Curitiba – PR  
Phone: +55 41 9 9578-4478  
Email: [tim.kvalem@roedl.com](mailto:tim.kvalem@roedl.com)

### VINÍCIUS MONTEIRO DE PAULA GUIRADO

E-mail: [guiradoqualidadedevida@gmail.com](mailto:guiradoqualidadedevida@gmail.com)  
Neurosurgeon – Preventive Medicine and Public Health –  
"Hospital das Clínicas" University of São Paulo and "Santa  
Casa de Misericórdia de São Paulo".

### VITOR GUILHERME COUTINHO DE BARROS JUNIOR

Rua Teodoro da Silva, 408, apt. 201  
Phone: +55 21 9 7289-2935  
E-mail: [vitorjunior@poli.ufrj.br](mailto:vitorjunior@poli.ufrj.br)  
Graduated: Mechanical Engineering – Federal University of  
Rio de Janeiro

### ZORAN OVUKA

Rua Alberto Castro 36  
Jardim Nova Europa  
Araras-SP CEP:13604-201  
Phone: +55 19 9 9819-0118  
Project Manager PMP

VI ÄR EN ADVOKATBYRÅ SOM INOM DIVERSE JURIDISKA OMRÅDEN  
TILLHANDAHÅLLER KOMPETENT, KREATIV OCH EFFEKTIV JURIDISK RÅDGIVNING.  
VÅRT MOTTO ÄR SÄKERHET, SNABBHET SAMT PRECISION I  
INFORMATIONSPROCESSEN SAMTIDIGT SOM VI STRÄVAR EFTER ATT VARA  
STÄNDIGT TILLGÄNGLIGA OCH HA EN NÄRA RELATION TILL VÅRA KLIENTER.

Erfarna och kompetenta advokater står till förfogande för  
tillhandahållande av högkvalitativ rådgivning inom ett flertal  
rättsområden, till exempel:

- Utländska investeringar
- Handelsrätt, kontrakt, kapitalmarknad, fusioner och förvärv
- Skatterätt
- Civilrätt
- Miljörätt
- Ärbetsrätt
- Förvaltningsrätt (anbud, reglering, projekt för infrastruktur, privatiseringar, gruvdrift...)
- Antitrust och internationell handelsrätt
- Ideell rätt
- Idrottsrätt
- Ekonomisk brottslighet

Vi är medlemmar av ALLIURIS International vilket är ett  
internationellt nätverk bestående av flera advokatbyråer med  
affärsjuridisk inriktning och närvaro i ett flertal länder.

I Sverige arbetar vi tillsammans med Svalner Skatt och  
Transaktion ([www.svalner.se](http://www.svalner.se)).

*NOSSO ESCRITÓRIO PRESTA ASSISTÊNCIA LEGAL NAS DIVERSAS ÁREAS  
DO DIREITO, COM CONHECIMENTO TÉCNICO, AGILIDADE, CRIATIVIDADE E EFICIÊNCIA,  
BUSCANDO SEMPRE UM RELACIONAMENTO ACESSÍVEL E PRÓXIMO AOS  
CLIENTES, E TEM POR OBJETIVO A SEGURANÇA, A RAPIDEZ E A PRECISÃO  
NAS INFORMAÇÕES PROCESSUAIS.*

*No consultivo contamos com advogados de alto nível para  
prestar as mais variadas informações, tais como:*

- Investimento Estrangeiro
- Direito Comercial, Contratos, Mercado de Capitais e Fusões e Aquisições
- Direito Tributário
- Contencioso Cível
- Direito Ambiental
- Direito do Trabalho
- Direito Administrativo (licitações, agências reguladoras, projetos de infraestrutura, privatizações, mineração...)
- Direito Antitruste e do Comércio Internacional
- Direito da Propriedade Intelectual
- Direito Esportivo
- Direito Penal Econômico

*Integramos a ALLIURIS International, associação de escritórios  
de advocacia empresarial presente em vários países.*

*Na Suécia, trabalhamos com o escritório Svalner Skatt och  
Transaktion ([www.svalner.se](http://www.svalner.se)).*

V O L V O

GREY Brasil

# Dirija um Volvo rumo ao futuro.

Temos uma gama crescente de modelos eletrificados,  
para que você dirija hoje com a eficiência e a sustentabilidade  
que o futuro precisa. E vamos trabalhar toda a nossa  
cadeia de valor para ter impacto neutro no clima até 2040.  
Porque temos apenas um planeta.







---

# Nós criamos o futuro na mineração.

## Juntos.

Tudo começa com os melhores profissionais, expertise em engenharia e mais de um século de conhecimento em eletrificação e em controle de processos em minas. Nosso time fornece soluções, serviços e produtos integrados para ajudar os nossos clientes dos setores de mineração e processamento de minérios a otimizarem sua produtividade e consumo de energia, atingindo maior disponibilidade, menores custos em investimentos e maior longevidade dos ativos. Ao longo de décadas, a ABB tem tido um papel ativo na indústria de mineração e minerais em todo o mundo, com uma ampla base instalada e forte envolvimento nos mais modernos projetos do setor. [abb.com/mining](http://abb.com/mining)



# CORPORATE MEMBERS



**AAK**

Av. José Alves de Oliveira, 333  
 Pq. Industrial Jundiaí – SP CEP: 13213-105  
 Phone: +55 11 4431-0000  
 E-mail: [aakvendas@aak.com](mailto:aakvendas@aak.com)  
[www.aak.com](http://www.aak.com)

AAK has more than 140 years of experience of innovating and customizing solutions based on vegetable oils and fats. In close collaboration with our customers, we use our expertise to create added value across the food, confectionery, and cosmetics industries. Through a responsible sourcing approach and relevant partnerships, we help you protect your brand and grow your business over the long term.

Regardless of your demands and requirements, AAK can provide solutions that will add value to your business. We offer tailor-made products and solutions, all developed to meet our customers' specific needs—taking you and your business to the next level.

**ABB**

Avenida do Anastácio, 740 – City America  
 São Paulo – SP CEP: 05119-000  
 Phone: 0800 014 9111 / +55 11 3688-9004  
 E-mail: [abb.atende@br.abb.com](mailto:abb.atende@br.abb.com)

ABB is a leading global technology company that energizes the transformation of society and industry to achieve a more productive, sustainable future. By connecting software to its electrification, robotics, automation and motion portfolio, ABB pushes the boundaries of technology to drive performance to new levels. With a history of excellence stretching back more than 130 years, ABB's success is driven by about 110,000 talented employees in over 100 countries.

**AF CONSULT DO BRASIL**

Rua Aurora, 124 – Jardim do Mar  
 São Bernardo do Campo – SP CEP: 09726-420  
 Phone: +55 11 3675-1775  
 E-mail: [info.br@afconsult.com](mailto:info.br@afconsult.com)  
[www.afconsult.com](http://www.afconsult.com)

**CURITIBA**

Rua Doutor Alexandre Gutierrez, 990, cj. 2201  
 Batel Curitiba – PR CEP: 80240-130

The ÅF Group is a leader in technical consulting, with expertise founded on more than a century of experience. Our work focuses on energy, investments in infrastructure and projects for industry.

Our base is in Europe, but our business and clients extend right across the globe.

What makes us unique is our co-workers, our networks and the technical consulting industry's greatest bank of experience. It's all summed up in our corporate motto: ÅF – Innovation by experience.

### **AKTOS CONSULTORIA**

Rua Barão do Triunfo, 88, cj. 211  
Brooklin São Paulo - SP CEP: 04602-000  
Phone: +55 11 9 9998-0507  
E-mail: frank.sowade@aktos.com.br  
www.aktos.com.br

Aktos TRANSFORMS to ADD VALUE for the CLIENT focused on the FINANCIAL RESULT of the company. A structured diagnosis defines the tools and the sequence of implementation, always aligned with our client. We do not only provide the tools, but we implement them and accompany the company after its implementation.

Know how transfer is one of our key goals. Our specialization: shop floor and related processes.

### **ALFA LAVAL**

Avenida Mutinga, 4935, Ed. A  
Vila Jaguara São Paulo - SP CEP: 05110-903  
Phone: +55 11 5188-6000 Fax: +55 11 5188-6003  
E-mail: alfalaval.br@alfalaval.com  
www.alfalaval.com.br

Alfa Laval is a leading global provider of specialized products and engineering solutions and acts in Brazil since 1959. It provides equipment for various industrial segments and, among its main products, we highlight the heat exchangers, centrifugal separators, pumps and valves.

### **ALL WAYS TRAVEL**

Rua da Consolação, 222, cj. 604  
São Paulo - SP CEP: 01302-000  
Phone: +55 11 3159-2284  
E-mail: solange@allwaystravel.com.br  
www.allwaystravel.com.br

All Ways Travel is a medium sized agency with specialized services in corporate, business travel, groups and events, always with personalized attention.

### **AM3 ASSESSORIA E CONSULTORIA**

Rua Dr. Orlando Feirabend Filho, 230, Bloco A, Sala 813  
Jd. Aquarius SJC- SP CEP: 12246-190  
Phone: +55 12 9 9159-4132  
E-mail: adriano.santos@am3consultoria.com.br  
www.am3consultoria.com.br

We deliver management advisory for small and medium size companies, from design of Business and Strategic Plan to its implementation. We go the extra mile in delivering consultancy services working along with our customer's operational teams. Our mission is to fully execute the strategic improvements and create a long-lasting culture of increased performance and control.

Our services range from Business Strategic Management, Operational Performance Improvements and Project Management Consultancy services.

### **ANGLO AMERICANA CONSULTORIA E ASSESSORIA DE IMÓVEIS**

Av Republica do Libano, 1190  
Vila Nova Conceição  
São Paulo- SP CEP: 04502-001  
Phone: +55 11 3887-4555  
E-mail: fale@angloamericana.com.br  
www.angloamericana.com.br

Anglo Americana has been in the real estate market since 1941 providing our clients with the best and personalized services. We sell, rent and manage luxury real estate always looking ahead. Our highly-trained and hard working team of agents are all certified and multilingual. We are well known in the market and a reference when it comes to welcoming clients from all over the world.

### **ARKLEY HOLDING AB**

Box 3035  
SE - 183 03 Täby - Sweden  
Phone: +46 8 756 7110  
E-mail: info@limedic.se

Arkley Holding AB – represents Vironova - a Swedish Biotech company that supplies unique solutions for



# INOVAÇÃO E TECNOLOGIA

PARA UM MUNDO MAIS  
SEGURO E ABERTO



A ASSA ABLOY é líder mundial no desenvolvimento e fabricação de soluções de segurança e aberturas de portas. No Brasil, o Grupo é representado por marcas de grande importância nacional e internacional: La Fonte, Yale, Papaiz, Silvana, Metalika, Vault e Udinese, que disponibilizam produtos inovadores e de qualidade reconhecida.

**ASSA ABLOY**



Curta nossas páginas! | [www.assaabloy.com.br](http://www.assaabloy.com.br)

Experience a safer  
and more open world

quality control of pharmaceuticals. Customers use Vironova's services and instruments to cost effectively ensure safety and reliability in pharmaceutical development and production. The instruments are also used for medical diagnosis. Since the founding of the company in 2005, Vironova has developed drug candidates and supplied nano-characterization services with aid of the proprietary technology.

#### **ASM RENOVA ENERGIA LTDA**

Av. Ayrton Senna, 2150, Bloco H, cj.208  
Rio de Janeiro – RJ Brasil  
Phone: +55 21 3030-7070  
E-mail: sanitizacao@asmprojetos.com.br  
www.asmbio.com.br

#### **ASSA ABLOY BRASIL**

Av. Luigi Papaiz, 239  
Diadema – SP Brasil  
Phone: +55 11 5693-4700  
E-mail: falecom@assaabloy.com  
www.assaabloy.com  
Instagram: @assaabloybr  
Facebook/ LinkedIn: ASSA ABLOY Brasil

ASSA ABLOY is the global leader in access solutions and a market leader in most of Europe, North America, South America, China and Oceania. ASSA ABLOY has a complete range of door opening products, solutions and services for the institutional, commercial and consumer markets. Using the latest technologies and tried-and-tested techniques, we are constantly developing innovative solutions that aim to every day help people feel safe, secure and experience a more open world.

#### **ASSISTERE CONSULTORES**

Avenida Irai, 75/79, cj. 54 A  
São Paulo – SP  
Phone: +55 11 3895-1000/ +55 11 2506-0000  
Whatsapp: +55 11 9 9431-2121  
E-mail: aleite@assistereconsultores.com.br /  
cjunqueira@assistereconsultores.com.br  
www.assistereconsultores.com.br

We are a consulting firm specialized in individual taxes and social security matters. Our professionals have a past career in Big 4 companies, thus, deeply

experienced in tax compliance assistance and consulting services.

Other relevant services we may also provide are those related to visa, immigration, relocation and cultural trainings.

#### **ASTRAZENECA**

Rodovia Raposo Tavares, Km 26,9  
Cotia – SP CEP: 06707-000  
Phone: +55 11 3737-1200  
E-mail: sac@astrazeneca.com  
www.astrazeneca.com.br

AstraZeneca is a global, science-led biopharmaceutical company that focuses on the discovery, development and commercialization of prescription medicines, primarily for the treatment of diseases in three therapy areas – Oncology, Cardiovascular, Renal & Metabolic Diseases and Respiratory. The Company also is selectively active in the areas of autoimmunity, neuroscience and infection. AstraZeneca operates in over 100 countries and its innovative medicines are used by millions of patients worldwide.

#### **ATLAS COPCO**

(COMPRESSOR TECHNIQUE)  
Alameda Araguaia, 2700  
Barueri – SP CEP: 06455-000  
Phone: +55 11 3478-8700  
E-mail: vendas.compressores@atlascope.com  
www.atlascope.com/pt-br

#### **(INDUSTRIAL TECHNIQUE)**

Avenida Ceci, 169  
Barueri – SP CEP: 06460-120  
Phone: +55 11 3478-6600  
E-mail: atendimento.tools@atlascope.com  
www.atlascope.com/pt-br

#### **(POWER TECHNIQUE)**

Av. Anápolis, 100 – 20º andar, Cj. 2001 e 2002  
Barueri – SP CEP: 06404-250  
E-mail: vendas.power@atlascope.com  
www.atlascope.com/pt-br

#### **(VACUUM TECHNIQUE)**

Av. Tamboré, 937  
Barueri – SP CEP: 06460-000

Phone: +55 11 3952-5018  
 E-mail: [divisao.vacuo@br.atlascopco.com](mailto:divisao.vacuo@br.atlascopco.com)  
[www.atlascopco.com/pt-br](http://www.atlascopco.com/pt-br)

Atlas Copco is a global, industrial company based in Stockholm, Sweden, with approximately 39,000 employees and customers in more than 180 countries. Our industrial ideas empower our customers to grow and drive society forward. This is how we create a better tomorrow. We are pioneers and technology drivers, and industries all over the world rely on our expertise. Our market-leading compressors, vacuum solutions, generators, pumps, power tools and assembly systems can be found everywhere.

Our mission is to achieve sustainable, profitable growth. This means innovating with a long-term perspective and supporting our customers to meet their sustainability ambitions.

#### **ATOS MEDICAL BRASIL & LATAM**

Av. Dr. Cardoso de Melo, 1608, 13th floor  
 Vila Olímpia São Paulo - SP CEP: 04548-005  
 E-mail: [info.br@atosmedical.com](mailto:info.br@atosmedical.com)  
[www.atosmedical.com.br](http://www.atosmedical.com.br)

Atos Medical Brasil is a subsidiary of Atos Medical AB that develops, produces and markets high quality medical devices, which improve quality of life for patients who breathe through a stoma, by giving them a voice. Atos Medical solutions and technologies were built on decades of experience and a deep understanding of our users. In Brazil, our subsidiary has started up its operation in October 2013, and since then we have been working together with healthcare professionals to providing the best quality of life for laryngectomy patients.

#### **AUTOLIV**

Av. Roberto Bertolotti, 551  
 Distrito Ind. do Piracanguaguá  
 Taubaté - SP CEP: 12042-045  
 Phone: +55 12 2125-1000 Fax: +55 12 2125-1069  
[www.autoliv.com](http://www.autoliv.com)

Save lives is our passion! Autoliv makes it by producing the best safety system in the world.

#### **AXIS COMMUNICATIONS**

Avenida Paulista, 37  
 São Paulo - SP CEP: 01311-012  
 Phone: +55 11 3050-6600 Fax: +55 11 3050-6601  
[www.axis.com](http://www.axis.com)

- An IT company offering network video, audio and access control solutions for professional installations
- Global market leader in network video, driving the ongoing shift from analog to digital video surveillance, audio and access control
- Axis develops and markets innovative network solutions for schools, retailers, transportation, and safe cities.
- Founded in 1984
- Worldwide presence in more than 40 countries, more than 3,000 employees
- Cooperation with distributors in 70 countries
- Global presence through resellers and system integrators in more than 179 countries

#### **BAMA CONSULTORIA EMPRESARIAL**

Rua Arandú, 205, cj. 1004  
 São Paulo - SP CEP: 04562-030  
 Phone: +55 11 5507- 4979  
 E-mail: [barry.bystedt@gmail.com](mailto:barry.bystedt@gmail.com)

Business consultancy specialized in corporate governance, quality systems, risk analysis, start-ups and project management. Real estate incorporations and administration of properties.

#### **BEXS BANK**

Av. das Nações Unidas, 11.633, 11º andar  
 Brooklin Paulista São Paulo - SP CEP: 04578-901  
 Phone: + 55 11 2712-5300  
 E-mail: [marketing@bexs.com.br](mailto:marketing@bexs.com.br)  
[www.bexs.com.br/](http://www.bexs.com.br/)

We are a Brazilian bank with long experience in FX, cross-border, and investment transactions offering comprehensive solutions for digital payments between companies in Brazil and abroad. The Bexs team has decades of expertise in Brazilian FX regulations and through a unique API Platform, our solution provides the collection of Brazilian currency via local payment methods, helping companies to connect with customers

in the digital world and to expand their customer base geographically.

Bexs is fully authorized by the Brazilian Central Bank and follows best market practices and compliance standards. Our clients include many Swedish companies from a wide range of industries, including technology.

#### **BM OPTIMUS CONSULTORIA**

Rua Belterra, 291, cj. 12A  
São Paulo - SP CEP: 04747-140  
Phone: +55 11 9 8473-5261  
E-mail: stefan@bmocon.com.br  
www.bmocon.com.br

BM Optimus Consultoria Ltda. is a business consulting firm that focuses on services related to management of three main areas: Start-ups, performance and change.

#### **BMO COMERCIAL E IMPORTAÇÃO**

Rua Américo Brasiliense, 2171, cj. 1010  
São Paulo - SP CEP: 04715-005  
Phone: +55 11 9 8473-5261  
E-mail: stefan@bmo-comercial.com.br  
www.bmo-comercial.com.br

Import/export company in São Paulo, Brazil. Authorized distributor for Micropower battery chargers.

#### **BOZZIL**

Rua Augusta, 2445, 5º andar  
Cerqueira Cesar São Paulo - SP CEP: 01413-100  
Phone: +55 11 3897-9666  
E-mail: stefanie@bozzil.com / marina.fontes@bozzil.com  
www.mdnun.com

Bozzil is a brand incubator for digital influencers. We help to create DTC brands to influencers from scratch, with products that represents their personality and lifestyle. We aim to create smart and technologic brands in a short time.

#### **BRAINCAPITAL EXECUTIVE SEARCH**

Phone: +55 11 9 8537-3418 / +55 11 9 8668-5127  
E-mail: contact@braincapital.com  
http://www.braincapital.com  
www.linkedin.com/in/carol-böttcher-4712785

BrainKapital Executive Search is specialized in strategic Talent search, selection of and Human Capital development for international companies of diverse sectors with small to mid-sized operations, in Brazil and Latin America. We are recognized for bringing differentiated intercultural added value, especially in the selection of middle Management and C-Level professionals for companies starting up locally. Our passion is to deliver excellence in all areas, maximizing our clients' business performance by equally supporting Professionals on their career development.

#### **BRASIL PROJECTS**

Avenida Cidade Jardim, 377, 8º andar  
Itaim Bibi São Paulo - SP CEP: 01453-900  
Phone: +55 11 3504-4500  
www.brasil-projects.com.br

Brasil Projects, a competitive Brazilian forwarding company located in the state of São Paulo in Brazil with offices in São Paulo and Santos.

We offer following segments in forwarding:

- Container and General Cargo
- Projects and special cargos
- Air freight
- Warehousing
- Supply chain
- Customs clearance
- Consultant services
- Projects management

#### **BRATAX – BRAZUNA, RUSCHMANN E SORIANO, SOCIEDADE DE ADVOGADOS**

Rua Pequetita, 215, 1º andar - cj. 11  
Edifício Atrium VII Vila Olímpia  
São Paulo - SP CEP: 04552-060  
Phone: +55 11 3185-0601  
Ciro Cesar Soriano De Oliveira  
E-mail: Cso@Bratax.Com.Br  
www.Bratax.Com.Br  
www.Linkedin.Com/Company/3252497?Trk=Tyah

We are an authentic partnership focused on tax law services, balancing technical capacity, interest in understanding the facts under analysis, closeness to the client's day to day reality and strategic vision of alternatives to pursue.

We seek to act under a pragmatic, efficient and quick



# ATOS MEDICAL ATENDEU 100 MIL PACIENTES COM LARINGECTOMIA EM MAIS DE 70 PAÍSES

**Fundada pelos irmãos Gert e Jan Ove Persson em 1986, empresa se tornou líder mundial em cuidados com estomas no pescoço**



A Suécia é um país pequeno, com uma população ao redor de 10 milhões de habitantes, mas é um país com um alto índice de multinacionais per capita. Atualmente mais de 200 empresas suecas operam no mercado brasileiro principalmente nos setores automotivo, farmacêutico, serviços digitais, equipamentos e serviços industriais e engenharia. Todas elas têm algo em comum, investir em

negócios sustentáveis com foco na responsabilidade sócio ambiental. Um dos exemplos é a Atos Medical, que foi fundada no sul da Suécia pelos irmãos Gert e Jan-Ove Persson em 1986 e desde então se consolidou como uma das líderes em cuidados com estomas no pescoço. Desde a introdução da primeira prótese vocal Provox® em 1990, a Atos Medical tornou-se líder mundial em cuidados com a laringectomia.

Ao longo destes 34 anos de vida, a empresa atendeu mais de 100.000 pacientes com laringectomia em mais de 70 países, ajudando na qualidade de vida dessas pessoas. O portfólio da empresa sueca é abrangente, incluindo uma linha completa de dispositivos de reabilitação pulmonar e de voz Provox de alta qualidade, permitindo uma solução personalizada para cada usuário.

Ser player neste campo envolve mais do que o desenvolvimento de produtos de primeira linha. Apoiar e incentivar a pesquisa clínica e a educação de profissionais e usuários são partes integrantes e fundamentais para o nosso negócio. Toda a gama de produtos da Atos Medical é apresentada em mais de 150 publicações revisadas por pares, além disso a

empresa apoia anualmente centenas de conferências e programas educacionais.

No Brasil, a subsidiária da Atos Medical se instalou em 2013, em São Paulo (SP). Desde meados de 2017, sob a gestão do atual Gerente Geral, Rafael Diniz, a empresa cresceu e implementou serviços de rigorosa qualidade para que os pacientes Laringectomizados e Traqueostomizados tenham todo suporte necessário em sua jornada de reabilitação, com um time de Enfermeiros especializados em campo que conseguem, sem custos, efetuar visitas domiciliares e ambulatoriais aos pacientes que necessitam de algum suporte clínico, adaptação ou apoio ao seu tratamento.

Entre os nossos produtos, destacamos a prótese de voz e laringe eletrônica, que permitem que os pacientes voltem a emitir voz (falar) e possam se reintegrar na sociedade, além dos filtros para estoma traqueal que promovem reabilitação a estes pacientes que passam a respirar permanentemente pelo estoma no pescoço e os protegem de inalar diretamente ao pulmão partículas, bactérias e vírus, como o COVID-19. "É extremamente gratificante notar que nossos pacientes conseguem melhorar muito a qualidade de vida. Muitos voltam a praticar atividades físicas, trabalhar, viajar com a família e voltar a realizar tarefas impensáveis até aderir ao tratamento. A Atos tem uma missão, que é promover uma vida mais tranquila, provendo cuidados personalizados e soluções inovadoras para pessoas que respiram através de um estoma", conta Rafael Diniz. A Atos quer permanecer na vanguarda e isso envolve o desenvolvimento de produtos de primeira linha com base em pesquisas clínicas profundas e percepções do cliente, bem como na educação de profissionais e pacientes.

## CONTATOS:

**Atos Medical Brasil Ltda.**

**Rua Cardoso de Melo 1608 / 13 andar**

**CEP 04548-005 / Vila Olimpia – São Paulo (SP)**

**Tels (11) 2305-2022 (11) 98979-1612**

**[info.br@atosmedical.com](mailto:info.br@atosmedical.com)**

**[www.atosmedical.com.br](http://www.atosmedical.com.br)**

**zPress Assessoria de Imprensa: Marcos**

**Wojdyslawski MTB 23.696**

**Tels. (11) 3207-5961 e 99297-6875**

**[marcos@zpress.com.br](mailto:marcos@zpress.com.br)**

solution approach to address tax issues, referred to tax law consulting; indirect, direct and international taxation; foreign trade taxation and tariff classification; administrative and judicial tax litigation.

#### **BRAZILIAN CHAMBER OF COMMERCE – SWEDEN**

C/o Törngren Magnell  
Jakobs torg 3  
SE - 111 52 Stockholm – Sweden  
COB: Hugo Oljemark - [hugo@brazilcham.se](mailto:hugo@brazilcham.se)  
Mobile: +46 72-241 1260  
CEO: Elisa Sohlman- [elisa@brazilcham.se](mailto:elisa@brazilcham.se)  
Mobile: +46 73-5841811

#### **BUSINESS CENTER SUÉCIA-BRASIL**

Rua Voluntários da Pátria, 475, cj. 805  
Curitiba - PR CEP: 80020-926  
Phone: +55 41 9992 -39676  
E-mail: [janice@suecia-brasil.com.br](mailto:janice@suecia-brasil.com.br)

Business Center Suécia-Brasil provides consulting services for foreign companies interested in Brazil or Sweden, offers Swedish language courses in Curitiba or via Skype, translations and interpretation to/from Swedish.

#### **BUSINESS SWEDEN**

Rua Joaquim Floriano, 466, cj. 1908  
Itaim Bibi São Paulo – SP CEP: 04534-002  
Phone: +55 11 2137-4400 Fax: +55 11 2137-4425  
E-mail: [brazil@business-sweden.se](mailto:brazil@business-sweden.se)  
[www.business-sweden.se/brasilien](http://www.business-sweden.se/brasilien)

We help Swedish companies grow global sales and international companies invest and expand in Sweden. Business Sweden has Swedish and foreign consultants in 50 of the world's most promising markets. Our office in Brazil is located in São Paulo in the neighborhood of Itaim Bibi.

#### **CAMFIL**

Rod. Adhemar de Barros, Km 133, Bairro Roseira  
Cod. Flex Parque Empresarial nº14  
Jaguariúna - SP CEP: 13917-470  
Phone: +55 19 3847- 8810  
E-mail: [sac@camfil.com](mailto:sac@camfil.com)  
[www.camfil.com](http://www.camfil.com)

Camfil is the main air filtration specialist, which business concept is to deliver value to customers all over the

world while contributing to something essential to everyone – clean air.

Our mission is to protect people, processes and the environment by defining, developing and delivering filter solutions that combine clean air with energy efficiency, in a sustainable and profitable way.

#### **CBN CONSULTORIA**

Avenida Alfredo Egydio de Souza Aranha, 100  
Vila Olímpia São Paulo - SP CEP: 04726-170  
Phone: +55 11 9 6398-7084  
E-mail: [contato@cbnconsultoria.com.br](mailto:contato@cbnconsultoria.com.br)  
<https://cbnconsultoria.com.br/>  
<https://www.linkedin.com/company/11571513/admin/>

'CBN Consultoria is recognized for helping organizations achieve extraordinary results, using existing resources, by redesigning the processes, systems and people management. Our consultants have extensive experience in the organizational environment, having experienced different situations inside and outside Brazil, contributing strongly to an amplified analysis of the situation and an accurate diagnosis. We tirelessly seek to make simple what seems complex.'

#### **CHALMERS UNIVERSITY OF TECHNOLOGY**

Chalmersplatsen, 4  
SE-412 96 Gothenburg – Sweden  
Phone: +46 31772-1000  
E-mail: [registrator@chalmers.se](mailto:registrator@chalmers.se)  
[www.chalmers.se/en](http://www.chalmers.se/en)

Chalmers University of Technology is a highly progressive and internationally top ranked university with strong links to industry and advanced research. Chalmers is an international university par excellence offering

- 39 English taught master's programmes within engineering, architecture and maritime & technology management
- Higher Education combining research, entrepreneurship, sustainability and innovation
- 100+ Scholarships
- Guaranteed housing and
- Top 90 in the world for graduate student employability

#### **CHILDHOOD BRASIL**

E-mail: [childhood@childhood.org.br](mailto:childhood@childhood.org.br)  
Facebook: <https://www.facebook.com/ChildhoodBrasil>



**Saving More Lives around the world**

## **Safety with you in mind**

Autoliv develops products for leading automakers worldwide to save 30,000 lives every year. Our Research and Development team keeps reinventing new solutions to make the journey safer to anyone's destination.

One of the most important parts of our culture is treating everyone with respect, striving to have a positive and diverse working environment. Also, we are proud of take care of our people, contributing to the wellbeing of the communities in which we live and work.

Autoliv Brazil is proudly part of the Global Autoliv family and Swedcham, Saving More Lives every day.

**Autoliv**

Instagram: <https://www.instagram.com/childhoodbrasil>  
 LinkedIn: <https://www.linkedin.com/company/childhood-brasil>  
 YouTube: <https://www.youtube.com/childhoodbrasil>  
 Site: [www.childhood.org.br](http://www.childhood.org.br)

Childhood Brasil is a non-profit organization and part of the World Childhood Foundation (Childhood), an international institution established in 1999 by Queen Silvia of Sweden. Childhood Brasil has been fighting for childhood free from sexual abuse and exploitation, and currently develops programs, influences public policy and educates and guides the private sector by promoting prevention and forming protection networks for Brazilian children and adolescents.

#### **CISB**

Rua Oscar Freire, 379, cj.122  
 São Paulo – SP CEP: 01426-001  
 Phone: +55 11 2157-0317  
 E-mail: [contact@cisb.org.br](mailto:contact@cisb.org.br)  
[www.cisb.org.br](http://www.cisb.org.br)

The Swedish-Brazilian Research and Innovation Centre is an innovation platform that promotes an environment capable of connecting people, fostering opportunities, catalyzing initiatives and producing results for its members and partners.

#### **CoSafe BRASIL**

Rua Paes Leme, 215, Conj. 2806  
 Pinheiros São Paulo – SP CEP 05424-150  
 Phone: +55 11 9 6306-8927  
 E-mail: [contato@cosafe.com.br](mailto:contato@cosafe.com.br)  
[www.cosafe.com.br](http://www.cosafe.com.br)  
[www.linkedin.com/company/35639220](https://www.linkedin.com/company/35639220)

Safety and Security digital platform for communication and documentation on Crisis Management. Risk Analysis, Protocols, Checklists, Loss Prevention, Crisis Management, Business Continuity and Corporate Security.

#### **COMEXPORT TRADING**

Av. das Nações Unidas, 10.989, 12º andar  
 São Paulo – SP CEP: 04578-900  
 Phone: +55 11 2162-1888  
[www.comexport.com.br](http://www.comexport.com.br)

Founded in 1973, COMEXPORT operates in several segments and has the most efficient and qualified international trading structure. With annual revenues north of US\$ 2 billion and a highly qualified staff, the Group consistently solidifies itself as a pioneer and industry leader in Brazil.

#### **COMPRENDAS CONSULTORIA DE COMPRAS E VENDAS LTDA**

Avenida Dra. Ruth Cardoso 8501, 17th floor  
 Pinheiros São Paulo-SP CEP: 05425-070  
 Contact: Marcus Huggare  
 Phone: + 55 11 9 7061 9287  
 E-mail: [marcus@comprendas.com](mailto:marcus@comprendas.com)  
[www.comprendas.com](http://www.comprendas.com)

Comprendas Consulting, operating out of São Paulo, provides Procurement & Supply Chain Consulting and Local Representation/Agent services in Brazil for foreign chemical/ingredient suppliers. Comprendas leverages a strong network of local freight forwarders & warehouse operators to provide a secure and cost & cash optimized supply of imported raw materials, driving value for both the foreign suppliers and their local customers.

#### **CONSULATE GENERAL OF DENMARK IN SÃO PAULO**

Consul General – Nikolaj Fredsted  
 Rua Oscar Freire, 379, cj. 31  
 São Paulo – SP CEP: 01426-001  
 Phone: +55 11 2127-0750  
[www.brasilien.um.dk](http://www.brasilien.um.dk)  
[www.facebook.com/dinamarcabrazil](https://www.facebook.com/dinamarcabrazil)

The Consulate General of Denmark in São Paulo is part of the Trade Council, which is the governmental export and investment promotion organization under the Ministry of Foreign Affairs of Denmark. The organization embraces all governmental activities designed to promote Danish export and foreign investment in Denmark.

In 2013 the Innovation Centre Denmark was opened at the Consulate, with the aim to strengthen collaboration between institutions and research centers to increase innovation.

#### **CONSULATE GENERAL OF SWEDEN IN SÃO PAULO**

Consul General: Renato Pacheco Neto  
 Vice Consul: Peter Johansson





# GROWING SWEDEN

Business Sweden strengthens Sweden as an attractive, innovative and competitive business partner. With around 400 employees both in Sweden and in 57 countries, Business Sweden facilitates and promotes the growth of Swedish companies abroad and investment opportunities for foreign companies in Sweden. We do this through strategic advice and hands-on support.

## IN BRAZIL WE HAVE A STRONG INDUSTRIAL FOCUS WITHIN

- ▶ Manufacturing
- ▶ ICT
- ▶ Energy & environment
- ▶ Health care & life science
- ▶ Defense

## WE HAVE LONG EXPERIENCE OF WORKING WITH BUSINESS DEVELOPMENT FOR SWEDISH SUBSIDIARIES IN THE FOLLOWING AREAS

- ▶ Market analysis and segmentation
- ▶ Public affairs & Stakeholder management
- ▶ Brand positioning
- ▶ Sales channel optimization
- ▶ Merger & Acquisition support
- ▶ Supply chain development
- ▶ Office space and administrative support for companies entering the market
- ▶ Executive recruitments

**WWW.BUSINESS-SWEDEN.SE**

T +55 11 2137 4400

brazil@business-sweden.se



Alameda Franca, 1050, cj. 33  
 São Paulo - SP CEP: 01422-002  
 Phone: +55 11 4130-3200  
 E-mail: [info@swedeninsp.org.br](mailto:info@swedeninsp.org.br)  
[www.swedeninsp.org.br](http://www.swedeninsp.org.br)

The Consulate General has jurisdiction over the states of Rio Grande do Sul, Santa Catarina, Paraná, Mato Grosso, Mato Grosso do Sul and São Paulo allowing 75 million Brazilians and 10 million Swedes access to general information about institutions, culture, economy and society in the respective countries, constantly interacting with various official agencies and partners in the cultural, scientific, educational and economic fields, both in Brazil and Sweden.

#### **CREDRISK SEGUROS SOCIEDADE DE CORRETAGEM DE SEGUROS DE CRÉDITO E GARANTIAS**

Avenida Brigadeiro Faria Lima, 2601, 8º andar  
 Jd. Paulistano São Paulo - SP CEP: 01452-924  
 Phone: +55 11 3093-8860  
 E-mail: [phillip.krinker@credriskseguros.com](mailto:phillip.krinker@credriskseguros.com)  
[www.credriskseguros.com](http://www.credriskseguros.com)

CredRisk Seguros is a specialized mono line trade credit insurance brokerage company. The company was founded in 2007 and is privately held. Presently, CredRisk Seguros insures receivables in most industrial and financial sectors of the Brazilian economy. CredRisk Seguros is licensed and authorized to operate in Brazil by the Superintendence of Private Insurances (SUSEP).

#### **DELLNER DO BRASIL**

Rua Osasco, 949  
 Parque Empresarial Anhanguera, km 33  
 Condomínio G8 Business Park Galpão E  
 Cajamar - SP CEP: 07753-040  
 Phone: +55 11 9 8216-6351  
 E-mail: [luis.augustoribeiro@dellner.com](mailto:luis.augustoribeiro@dellner.com)  
[www.dellner.com](http://www.dellner.com)

Dellner is a world leader in Train Connection Systems providing products, system packages and services to the majority of the worldwide train manufacturers and operators. Dellner's reputation is based on innovative research and advanced design. Based in Sweden, the company has 17 sites throughout the global - the

South American markets are supported by two operations (Brazil and Argentina) and main office located in São Paulo, Brazil.

#### **DIAVERUM**

Rua do Rócio, 291, cj. 92  
 Vila Olímpia - São Paulo - SP  
 CEP: 04552-000  
[www.diaverum.com/en-AR/Home/](http://www.diaverum.com/en-AR/Home/)

Diaverum is a global integrated renal care provider with a clear patient focus. We stand for excellent medical quality, renal care services and a patient-centered research. Being product-independent also gives us the flexibility to offer individual treatments for the individual needs of our patients, and by coordinating our patients' healthcare needs we are improving their quality of life.

#### **DNB BANK ASA**

Rua Lauro Muller, 116, Suíte 3108  
 Rio de Janeiro - RJ CEP: 22290-160  
 Phone: +55 21 2137-1650  
 E-mail: [brazil@dnb.no](mailto:brazil@dnb.no)  
[www.dnb.no](http://www.dnb.no)

DNB is a large Nordic financial services group and a world leading player within shipping, offshore and energy with significant activity in Latin America for more than 30 years. With a total of 13 professionals located in Rio de Janeiro - Brazil and Santiago - Chile, we have the competence needed to be the best discussion partner for structuring the optimal financial solutions for our Nordic and international corporate clients.

#### **DOBROY & PARTNERS INTERNATIONAL - CONSULTANTS IN LEADERSHIP**

Rua da Consolação, 3726, cj. 31  
 São Paulo - SP CEP: 01416-002  
 Phone: +55 11 3813-2477  
 E-mail: [andras.dobroy@dobroy.com](mailto:andras.dobroy@dobroy.com)  
[www.dobroy.com](http://www.dobroy.com)

Founded in 1983, we are a multi-disciplinary Management Consulting Firm whose aim is to help client organizations improve their performance. We serve our clients as objective advisors, providing

judgment, insight and counsel in three areas of strategic importance: Recruiting of Business Leaders (our favorite term for Managers), Leadership Consulting Services (focused on the Building of Leadership Capital), Marketing Related Services and International Business Partner Search. We bring to every assignment a combination of International Corporate and Consulting Experience and a senior management perspective.

#### EKAMANT DO BRASIL

Rua Enxovia, 472, cj. 1513  
São Paulo - SP CEP: 04711-030  
Phone: +55 11 3360-6230 Mobile: +55 11 9 5064 4090  
E-mail: johan.fager@kazamax.com /  
fabio.silva@ekamant.com  
www.ekamant.com

#### EKAMANT - SWEDISH QUALITY ABRASIVES

Ekamant is one of the world leading producers of coated abrasive products for the wood industry. The

company was founded in 1928 with headquarters in the south of Sweden.

Our products are sold in more than 50 countries around the globe. We have our own global sales organization and conversion plants in eight different countries with approximately 500 employees in total. We have abrasives for wood, metal and leather.

#### EKN - THE SWEDISH EXPORT CREDIT AGENCY

Kungsgatan 36, Box 3064  
SE-103 61 Stockholm - Sweden  
Phone: +46 8 788 00 00  
www.ekn.se

EKN is a government agency that supports Swedish exports and the internationalization of Swedish industry. We offer exporting companies and banks guarantees for payment and financing. Our services provide an additional level of confidence, increased competitiveness and more opportunities for successful export transactions.

## Componentes Sinterizados

### Tecnologia mundial na indústria nacional

A Höganäs produz, **aqui mesmo no Brasil**, o que existe de mais avançado no mundo para a produção de componentes sinterizados.

Componentes fabricados com pó de ferro e aço são hoje uma das soluções mais competitivas e eficientes do mercado para uma grande variedade de aplicações, especialmente em peças com geometria complexa.

Com os componentes sinterizados **menos é mais**:

- Reduz etapas de processamento;
- Menos ou sem usinagem;
- 97% de aproveitamento de matéria-prima e energia; e
- Resultado direto em custo

Fale com um especialista e saiba mais.

[contato.br@hoganäs.com](mailto:contato.br@hoganäs.com)

**Höganäs**   
[www.hoganäs.com](http://www.hoganäs.com)





**ELECTROLUX**

Rua Verbo Divino, 1488, 7º andar  
 São Paulo – SP CEP: 04719-904  
 Phone: +55 11 2168-1155  
 E-mail: [contato.sac@electrolux.com.br](mailto:contato.sac@electrolux.com.br)  
[www.electrolux.com.br](http://www.electrolux.com.br)

Electrolux shapes living for the better by reinventing taste, care and wellbeing experiences, making life more enjoyable and sustainable for millions of people. As a leading global appliance company, we place the consumer at the heart of everything we do. Through our brands, including Electrolux, AEG, Anova, Frigidaire, Westinghouse and Zanussi, we sell more than 60 million household and professional products in more than 120 markets every year.

Electrolux has been doing business since 1919. The headquarters are located in Stockholm, Sweden, and the Electrolux share ELUXb is listed on Nasdaq OMX Stockholm.

**ELEKTA MEDICAL SYSTEMS**

Avenida Brigadeiro Faria Lima, 1355 cj. 2001  
 São Paulo – SP CEP: 01452-919  
 Phone: +55 11 5054-4550 Fax: +55 11 5054-4568  
 E-mail: [Info.Brasil@elekta.com](mailto:Info.Brasil@elekta.com)  
[www.elekta.com/brasil](http://www.elekta.com/brasil)

Elekta is a human care company pioneering in significant innovations and clinical solutions for treating cancer and brain disorders. Elekta provides intelligent and resource-efficient technologies that improve, prolong and save patient lives.

**ELOF HANSSON**

Rua Líbero Badaró, 293, 10º andar, cj. 10B  
 São Paulo – SP CEP: 01009-000  
 Phone: +55 11 3101-5257  
 E-mail: [ehbrazil@elofhansson.com](mailto:ehbrazil@elofhansson.com)  
[www.elofhansson.com.br](http://www.elofhansson.com.br)

Worldwide marketing and distribution of pulp, paper, timber, machinery and consumer products.

**EPIROC**

Alameda Tocantins, 125. 8º andar. Salas 801/802  
 Barueri – SP Brasil CEP: 06455-931  
 Phone: +55 11 3478- 8200

E-mail: [contato.brasil@epiroc.com](mailto:contato.brasil@epiroc.com)  
<https://www.epiroc.com/pt-br>  
 Facebook – <https://www.facebook.com/epirocbrasil/>  
 Twitter – <https://twitter.com/epirocgroup>  
 Instagram – <https://www.instagram.com/epirocgroup/>  
 LinkedIn – <https://www.linkedin.com/company/epiroc/>

Epiroc is a leading productivity partner for the mining, infrastructure and natural resources industries. With cutting-edge technology, Epiroc develops and produces innovative drill rigs, rock excavation and construction equipment, and provides world-class service and consumables. The company was founded in Stockholm, Sweden, and has passionate people supporting and collaborating with customers in more than 150 countries.

**ERICSSON TELECOMUNICAÇÕES**

Av. Nicolas Boer, 399  
 Parque Industrial Tomas Edson  
 São Paulo – SP CEP: 01140-060  
 Phone: +55 11 2224-2000  
[www.ericsson.com.br](http://www.ericsson.com.br)

Ericsson is the driving force of the networked society – a world leader in communications technology and services. Our long-term relationships with every major telecom operator allow people, business and society to innovate and know the future in advance, such as IoT, Digital Transformation and 5G, functions that begun to change the networked society, and make our partners realize their potential and start to create a future with great solutions.

**ESSITY BRASIL (SCA DO BRASIL)**

Av. do Progresso, altura n.º 1030  
 Condomínio Gaia AR – Ed. Garça – Porta 26  
 Jarinu – SP CEP: 13240-000  
 Caixa Postal 40

Eldorado Business Tower  
 Avenida Dra. Ruth Cardoso, 8501, 7º andar, 71B  
 São Paulo – SP

Essity is a leading global hygiene and health company dedicated to improving well-being through its innovative solutions. Number one global player for the Incontinence Market with TENA® brand, it also develops a successful Professional Hygiene line commercial.



# DNB – a Norwegian Bank, well positioned in Brazil

Doing business in Brazil for more than  
40 years, with the best blend of Nordic  
flavor and local expertise.

## **Rio de Janeiro**

brazil@dnb.no  
+ 55 21 2137 1650

## **Santiago**

dnb.santiago@dnb.no  
+56 22 9230100

[www.dnb.no](http://www.dnb.no)





cialized through B2B under Tork® brand, and offers cutting-edge products in wound care, compression therapy and orthopedics under Jobst®, Actimove®, Leukoplast®, Cutimed® brand among others.

The production site is located in Jarinu/SP and head-quarter is located in São Paulo. Currently the company has 530 employees.

### ESTÚDIO ANADARCO

Caixa Postal 149  
Guararema – SP CEP: 08900-000  
Phone: +55 11 9 9910-5356  
E-mail: [contato@anadarco.com.br](mailto:contato@anadarco.com.br)  
[www.anadarco.com.br](http://www.anadarco.com.br)

During the past ten years, we've been developing projects related to culture and communication combining video, graphic design, illustration and photography. In each job, our main goal is to make information interesting and accessible.

### EVCOM

Phone: +55 11 3644-3075 / +55 11 9 8299-0945  
E-mail: [contato@evcom.com.br](mailto:contato@evcom.com.br)  
[www.evcom.com.br](http://www.evcom.com.br)

Marketing and Communications as a transforming element. Something that creates bridges, more than just selling products. But how? With deep understanding of brands, people, products and services. That's what evcom does. For the last 16 years we've been helping companies and professionals of all kinds and sizes to reach out for their audiences. Anywhere, with every possible tool. Respecting clients' budgets and cultures, but always showing that there are no limits for creativity.

### EVERTEAM

Birger Jarlgatan, 2  
SE- 114 34 Stockholm – Sweden  
Phone: +46 8 694 77 00  
E-mail: [info@everteam.se](mailto:info@everteam.se)  
[www.everteam.se](http://www.everteam.se)

Evertime is a consulting firm providing system implementation and project management consulting services with focus on ERP systems, for instance SAP.

Our niche competence is geographical solutions of SAP, the so-called SAP localizations. So far, we have implemented SAP for several companies in Brazil, Russia, India and China, among others. We support our clients in their efforts to Think global – Act local.

### FINANZERO

Avenida Paulista, 1499, cj. 2110  
Jardins São Paulo CEP: 01311-200  
Phone: 0800 607 3001  
E-mail: [atendimento@finanzero.com.br](mailto:atendimento@finanzero.com.br)

Brazil's number one loan marketplace  
FinanZero has simplified the way to apply for all types of consumer loan products in Brazil. The company has 3 million monthly visits to the site and over 10 million credit applications through [finanzero.com.br](http://finanzero.com.br). It launched its operations in 2016, and today the company's services include loans and refinancing and have 40 bank partners

### FRAGOMEN BRASIL SERVIÇOS DE IMIGRAÇÃO

Av. Dr. Cardoso de Melo, 878 – 5º andar  
Vila Olímpia São Paulo – SP CEP: 04548-003  
Contact: Charlotta Carlsdotter Mazini  
E-mail: [cmazini@fragomen.com](mailto:cmazini@fragomen.com)  
Phone: +55 11 3506-5250 / 5262  
Cel: +55 11 9 4546- 4640  
[www.fragomen.com](http://www.fragomen.com)  
LinkedIn: <https://www.linkedin.com/company/fragomen-del-rey-bernsen-et-loewy/?originalSubdomain=pt>  
Facebook: <https://www.facebook.com/Fragomen-Worldwide/>  
Twitter: <https://twitter.com/fragomen>  
Instagram: <https://www.instagram.com/fragomen-worldwide/>

Fragomen is recognized as the world's leading corporate immigration services provider and adviser. We are structured to support all aspects of global immigration, including strategic planning, efficiency, quality management, compliance, government relations, reporting, and case management and processing. These capabilities allow us to represent a broad range of companies, organizations and individuals, working in partnership with clients to facilitate the transfer of employees worldwide.

**FREYR**

Rua Dona Veridiana 22, cj. 41  
 São Paulo -SP CEP: 01238-010  
 Phone: +55 11 9 9443 5193  
 E-mail: peter.storm.munck@gmail.com

Freyr is a Scandinavian/Brazilian Consulting firm specialized in five areas:

1. Supporting foreign companies to enter the Brazilian market
2. Corporate Social Responsibility (CSR) and NGO support; the representative of Kolibri - Children at Risk Foundation, advice on tax deduction incentives for companies to support Brazilian NGOs
3. Translation of texts (Portuguese, English and French)
4. Assistance in the production of foreign-made documentaries in Brazil
5. Webpage design, social media (SoMe) marketing & commercial support

**FUNDALUMINIO****GELATO BRASIL**

Av. Paulista, 2028  
 Bela Vista São Paulo – SP CEP: 01310-200  
 Phone: +55 11 9 4448-3133  
 E-mail: marcos.scorzoni@gelato.com  
[www.gelato.com](http://www.gelato.com)  
<https://www.linkedin.com/company-beta/5037871/admin/updates/>  
[https://twitter.com/Gelato\\_Globe](https://twitter.com/Gelato_Globe)  
<https://www.facebook.com/GelatoGlobe/?fref=ts>  
<https://www.instagram.com/gelatoglobe/>

We're here to create the most cost-efficient and environmentally-friendly print solution for global companies which will help them to print locally around the world. All to the benefit of your business. And the planet.

# Gripen

# has

# landed



theCrosbygroup

Since 1764, safety is our highest priority.

The biggest export contract from Sweden.  
 The largest collaboration between Sweden and Brazil.  
 A major step for the Brazilian Defence industry.  
 The safest lifting solution.



Gunnebo Industries is proud to participate in this historical moment when Gripen touched Brazilian soil for the first time. Gunnebo Industries also celebrates the centenary influences of Swedish culture and all Swedish companies with a long-term commitment and presence in Brazil.

A large, abstract teal graphic on the left side of the page, consisting of two overlapping rounded shapes that form a stylized '8' or a continuous loop.

**Building best-in-class  
companies since 1916**

**investor**

[www.investorab.com](http://www.investorab.com)

**GETINGE DO BRASIL**

Av. Manuel Bandeira, 291, Bloco B - 2º andar  
conjuntos 33 e 34  
São Paulo - SP CEP: 05317-020  
Phone: +55 11 2608-7400  
E-mail: [info.latinamerica@getinge.com](mailto:info.latinamerica@getinge.com)  
[www.getinge.com/br](http://www.getinge.com/br)

With a firm belief that every person and community should have access to the best possible care, Getinge provides hospitals and life science institutions with products and solutions aiming to improve clinical results and optimize workflows. The offering includes products and solutions for intensive care, cardiovascular procedures, operating rooms, sterile reprocessing and life science. Getinge employs over 10,000 people worldwide and the products are sold in more than 135 countries.

**GUNNEBO GATEWAY**

Rua Tomás Sepé, 350  
Cotia - SP CEP: 06711-270  
Phone: +55 11 3732-6626  
E-mail: [info.br@gunnebo.com](mailto:info.br@gunnebo.com)  
[www.gunnebo.com.br](http://www.gunnebo.com.br)

Gunnebo AB is a listed company offering security solutions through a wide range of products and services primarily within in Retail security, bank security, cash handling, secure storage and entrance control. Gunnebo has decades of experience in delivering efficient and innovative security and is unique in its ability to offer the complete package – security from outside to in, with installation, maintenance and full after-sales service. Gunnebo's security solutions protect people, buildings and property, focusing on total security packages for a number of high-risk sites and sectors.

**GUNNEBO INDUSTRIES**

Rua Guarani, 485  
Conceição Diadema - SP CEP: 09991-060  
Phone: +55 11 4055-9800 Fax: +55 11 4056-5300  
E-mail: [vendas@gunneboindustries.com.br](mailto:vendas@gunneboindustries.com.br)  
[www.gunneboindustries.com.br](http://www.gunneboindustries.com.br)

Gunnebo Industries is an international company, active all over the world. We are global leaders in several areas within the lifting- and material handling industry for which we manufacture products such as

crane blocks, wire rope sheaves, chain & lifting components, shackles and lashing products. Our products are well known and established on the market as a premium product with outstanding safety.

**HALDEX**

Av. Sebastião Henrique da Cunha Pontes, 8000  
Marginal B - Via Dutra Cond. Century  
São José dos Campos - SP CEP: 12238-000  
E-mail: [info@haldex.com.br](mailto:info@haldex.com.br)  
[www.haldex.com.br](http://www.haldex.com.br)

Haldex Brazilian branch supplies products for Commercial Vehicles. It has the focus on ABS, Brake and Suspension Valves for trailers; Automatic Brake Adjusters, Air Dryers and Consep for trucks and buses OEM and After Market within South and Central America. It has local production of brake & suspension valves, Consep and automatic brake adjusters.

**HORTON INTERNATIONAL**

Rua Viradouro, 63, cj. 141  
São Paulo - SP CEP: 04538 110  
Phone: +55 11 9 9782-5265  
E-mail: [frenster@hortoninternational.com](mailto:frenster@hortoninternational.com)  
[www.hortoninternational.com](http://www.hortoninternational.com)

Executive/Professional Search and Management Consulting for Industrial, life sciences, infra structure, agribusiness, IT/Digitalization, consumer markets and other sectors. We are a Global company. Our São Paulo/Brazil office may also assist you in other South American countries.

**HÖGANÄS**

Rua Adolfo Lutz, 232  
Mogi das Cruzes - SP CEP: 08810-020  
Phone: +55 11 4793-7744  
E-mail: [contato.br@hoganas.com](mailto:contato.br@hoganas.com)  
[www.hoganas.com.br](http://www.hoganas.com.br)

Höganäs' vision is to inspire industry to make more with less. By utilizing the endless opportunities of our metal powders, we continue on our journey to deliver on the ever-rising resource efficiency challenges, leading a wave of change for the better. With people at every level of our organization dedicated to redefining what is possible, we continue to amaze the world with new breakthroughs.

**HUSQVARNA**

Avenida Manuel Bandeira, 291 – 1º andar  
 Conj. 22 e 23(A) – Bloco B  
 Condomínio Atlas Office Park  
 Vila Leopoldina São Paulo – SP CEP: 05317-020  
 SAC: 2133-4877  
[www.husqvarna.com.br](http://www.husqvarna.com.br)

Husqvarna Group is the world's largest producer of outdoor power products for forest, park and garden. It is also the European leader in consumer watering products and one of the world leaders in cutting equipment and diamond tools for the construction and stone industries.

**HYPER ISLAND**

Stockholm  
 Virkesvägen 2  
 SE - 120 30 Stockholm  
 Phone: +55 11 9 9135-2064 (Benito Berretta)  
 E-mail: [benito.berretta@hyperisland.com](mailto:benito.berretta@hyperisland.com)  
[www.hyperisland.com](http://www.hyperisland.com)

Hyper Island is a creative business school with consulting services which enables individuals and organizations to see, understand and act upon the opportunities created by digital and technological evolution.

Hyper Island supports you to change your tomorrow by sharing competence and creating confidence through collaboration, creativity and innovation.

**IMAGEM CORPORATIVA**

Avenida Angélica, 2530, 19º andar  
 São Paulo – SP CEP: 01228-200  
 Phone: +55 11 3526-4500  
 E-mail: [administrativo@iccom.com.br](mailto:administrativo@iccom.com.br)  
[www.iccom.com.br](http://www.iccom.com.br)  
<https://www.linkedin.com/company/imagem-corporativa/?originalSubdomain=pt>  
<https://www.instagram.com/imagemcorporativabr/>

Imagem Corporativa is a public relations agency with its own offices in São Paulo, Rio de Janeiro and Brasília. IC is the only Brazilian agency member of PROI Worldwide and Interel Global Partnership – focused on PR and Public Affairs activities respectively. Through these connections, we support organizations in the relationship with the Brazilian market and also act as ambassadors for our clients abroad, opening dialogues with different audiences.

**INATEL – FINATEL**

Av. João de Camargo, 510  
 Santa Rita do Sapucaí – MG CEP: 37540-000  
 Phone: +55 35 3471-9350  
 E-mail: [abbade@inatel.br](mailto:abbade@inatel.br)  
[www.inatel.br](http://www.inatel.br)

Finatel—The National Institute of Telecommunications Foundation is a private, non-profit law institution that maintains Inatel—which is a center of excellence in teaching and research in the area of Engineering, and has been increasingly consolidated in Brazil and abroad. In addition to a college, Inatel also operates as an extension of the areas of Research, Development & Innovation, of companies and transfers all academia knowledge through a service center—Inatel Competence Center – ICC.

**INNOVATIVE MEDICINES DO BRASIL**

Rua Vieira de Castro, 285, sala 501  
 Porto Alegre – RS Brasil CEP: 90040-320  
 Phone: +55 51 3573-7341  
 E-mail: [rpires@imedicesgroup.com](mailto:rpires@imedicesgroup.com)  
[www.imedicesgroup.com](http://www.imedicesgroup.com)

Innovative Medicines is a privately held company created with the objective of filling the very specific and special medical needs of a small population of adults and children seeking life-preserving therapeutics for rare diseases. Following the leadership of its partners around the world and under the management of a highly experienced team, Innovative Medicines pursues the objective of becoming the leading biopharmaceutical research company in Latin America.

**INTER IKEA SYSTEMS B.V.**

Olof Palmestraat 1  
 2616 LN Delft, the Netherlands  
 Phone: +31 622115869  
 E-mail: [ehsan.turabaz@inter.ikea.com](mailto:ehsan.turabaz@inter.ikea.com)  
 Mike de Blij – [mike.deblj@inter.ikea.com](mailto:mike.deblj@inter.ikea.com)  
<https://about.ikea.com/en/contact/how-to-buy-ikea-products-from-a-different-country>

Inter IKEA Systems B.V. is the worldwide IKEA franchisor and we are constantly investigating expansion opportunities in interesting markets with the aim of reaching more of the many people with affordable home furniture solutions. Brazil is one of those countries.



\*\*\*  
Swedish Match.

AGORA A **SUA COZINHA**  
FICOU MAIS COMPLETA!



**PROTETOR PARA  
FOGÃO**

100% reciclável, reutilizável.

**FILME DE  
POLIÉSTER  
PARA  
CHURRASCO**

Ideal para carnes,  
aves e peixes.  
Assa por completo  
deixando a carne  
mais saborosa  
e macia.



**SACOS PARA ASSAR  
FORNO**

Assa mais rápido e por igual.  
Dispensa regar o alimento e  
mantém o forno limpo.

**PAPEL  
MANTEIGA  
FORNO,  
MICROONDAS  
E FREEZER**

Evita que os  
alimentos grudem  
na geladeira.  
Ideal para forrar  
formas de bolo.

**SACOS PLÁSTICOS PARA ALIMENTOS  
FREEZER, GELADEIRA E MICROONDAS**

Conserva melhor os alimentos e inibe odores.

**SIGAM NOSSAS  
REDES SOCIAIS**



@FIATLUX\_BRASIL



SOMOSFIATLUX

WWW.SWEDISHMATCH.COM.BR



**Accelerating  
performance**

**OUR INNOVATIVE SOLUTIONS ACCELERATE  
PERFORMANCE IN A SUSTAINABLE WAY**

Trelleborg is a world leader in engineered polymer solutions that seal, damp and protect critical applications in demanding environments. Our innovative solutions accelerate performance for our customers in a sustainable way. The Trelleborg Group has local presence in over 40 countries around the world.

[www.trelleborg.com](http://www.trelleborg.com)

[TRELLEBORG.COM](http://TRELLEBORG.COM)

The International Sales Department sells the full IKEA product range to clients in countries where there is currently no IKEA store.

We furnish apartments, hotels, offices, schools, restaurants and houses throughout the world.

### INTRODE INTEGRATED SOLUTIONS

Avenida Paulista, 1.636, cj. 706  
São Paulo - SP CEP: 01311-200  
Phone: +55 11 2391-9424  
E-mail: [raltafini@introduce.com.br](mailto:raltafini@introduce.com.br)  
[www.introduce.com.br](http://www.introduce.com.br)

Introduce has just completed 19 years helping your customers to develop their Totvs Microsiga Protheus system. We act mainly on Deployment, Development, Training, HelpDesk and Maintenance.

We have deep knowledge and large experience. If you are looking for a system consulting company to support your operation in Brazil, we are your choice! We are ready to help you!

### INVEST PARTNERS

Rua James Joule, 92, cj. 101  
São Paulo - SP CEP: 04576-080  
E-mail: [jjarne@invest-partners.com](mailto:jjarne@invest-partners.com)  
[www.invest-partners.com](http://www.invest-partners.com)  
[www.cdiglobal.com](http://www.cdiglobal.com)

Accelerator & Advisor in Strategic Growth Initiatives and Corporate Finance:

- Full Market Entry facilitation, Subsidiary management and Backoffice
- Market Opportunity Scan, Validation and Partner search
- Venture De-Risking, Consulting and Rapid Growth
- Business combinations - M&A, Joint Ventures, Licensing agreements
- Accelerate International Startups and Commercialize through our Ecosystems
- Digital Transformation of Disruptive Technology
- Funding & Roadshow - Private Equity/Venture Capital/ Public Grants
- Valuations, Financial Modeling, and Business Plans
- Board representation

### IT'SSEG SEGUROS INTELIGENTES

Av. Brigadeiro Faria Lima, 1.478, 14º, 15º e 18º andares  
Jd. Paulistano São Paulo - SP CEP: 01451-001

Phone: +55 11 5054- 5100  
E-mail: [contato@itsseg.com](mailto:contato@itsseg.com)  
<http://segurosinteligentes.com.br/>

We are an insurance broker that offers smart benefits consulting and risk management. Our Health System uses big data to access HR and medical management data to help clients take strategic decisions related to contracts. In addition, our Benefits System allows shared benefit management and 100% digital and intuitive interaction between HR and its employees. We are an It'sSeg Company and we serve more than 1000 corporate clients.

### iZettle

Rua Gomes de Carvalho, 1507, 16º andar  
Vila Olímpia São Paulo - SP CEP: 04547-005  
Phone: +55 3003-0688  
E-mail: [marcom.br@izettle.com](mailto:marcom.br@izettle.com)  
[www.izettle.com.br](http://www.izettle.com.br)

iZettle has systems to help micro and small merchants succeed in a world of giants. Through iZettle's point of sale systems and card readers, merchants can easily and reliably organize their businesses and accept credit card payments. iZettle a PayPal service.

### JÖNKÖPING UNIVERSITY

P.O Box 1026  
SE- 551 11 Jönköping - Sweden  
E-mail: [roy.andersson@ju.se](mailto:roy.andersson@ju.se)  
[www.ju.se](http://www.ju.se)

Jönköping University (JU) has a close cooperation with business and society.

JU encourage students to do their industrial placement and thesis work in cooperation with companies in Brazil. As a company you can see the advantages to cooperate in a project with our students for a period of 2-12 months. JU is one of the best Universities in Sweden for example the best application rate when it comes to Undergraduate Engineering level.

### KAZAMAX

Rua Enxovia, 472, cj. 1513  
São Paulo - SP CEP: 04711-030  
Phone: +55 11 3360-6230  
E-mail: [johan.fager@kazamax.com](mailto:johan.fager@kazamax.com)  
[www.kazamax.com](http://www.kazamax.com)

Kazamax helps companies to successfully navigate the Brazilian market and achieve better results. We offer Partnerships, Business Consulting, Execution support and Governance.

#### **KINCAID | MENDES VIANNA ADVOGADOS**

Avenida Brigadeiro Faria Lima, 3729 - 5º andar  
Itaim Bibi São Paulo- SP CEP: 04538-905  
Phone: +55 11 3045-2442  
E-mail: [lucas@kincaid.com.br](mailto:lucas@kincaid.com.br)  
<http://www.kincaid.com.br>

Founded in 1932, Kincaid | Mendes Vianna Advogados is one of the most traditional law firms in Brazil, with extensive experience in providing legal advice to national and international clients. Headquartered in Rio de Janeiro, with offices in São Paulo, Brasília and Vitória, we operate throughout the national territory, in the areas of Maritime, Port Law, Infrastructure, Energy, Oil & Gas, Insurance & Reinsurance, Litigation, Arbitration and ADR, Tax and Customs Law, Labour,

Regulatory, Corporate, Environmental, Commercial Contracts and Compliance Services.

#### **KTH ROYAL INSTITUTE OF TECHNOLOGY**

Brinellvägen 8  
SE- 100 44 Stockholm Sweden  
Phone: +46 8 790 60 00  
(International Relations Office)  
E-mail: [info@kth.se](mailto:info@kth.se)  
[www.kth.se/en](http://www.kth.se/en)

KTH was founded in 1827. It is the largest and oldest technical university in Sweden, responding for one third of technical research and engineering education in the country. Research and education include engineering, natural sciences, architecture, industrial management and urban planning. KTH has five campi in the Stockholm region, with 12,800 full time students, of which 33 percent are women and 67 percent men. KTH is highly active in research and innovation having some 2000 PhD students, and approximately 3700 full time employees.



Making Future.

## Automotive R&D

#### **Expertise within all vehicle development areas**

The automotive industry is under a disruptive transition driven by technologies such as electromobility, connectivity and autonomous vehicles. To support this transition, we provide excellence in development and integration of all systems and attributes for complete vehicles.

Our expertise spans over all vehicle development areas and we have the capacity and capability to deliver turnkey solutions. With profound skills we help you develop and integrate systems like body, chassis, interior, infotainment, electrical drivelines, AD/ADAS to complete vehicles. To shorten development time, we utilize the latest CAE methods and technologies.

We support you in all project phases - from idea, design, development and test, to manufacturing and product release, as well as problem solving on existing products. Our clients are supported globally with onsite assignments and complete turnkey solutions from our automotive offices in Sweden, Brazil, UK, China and India.

#### **Our strength within Automotive R&D is based on our expertise in:**

- Body, Exterior & Interior
- Chassis & Powertrain Integration
- Electromobility
- Autonomous Vehicle and Connectivity
- Vehicle Integration

**Read more at [afconsult.com](http://afconsult.com)**



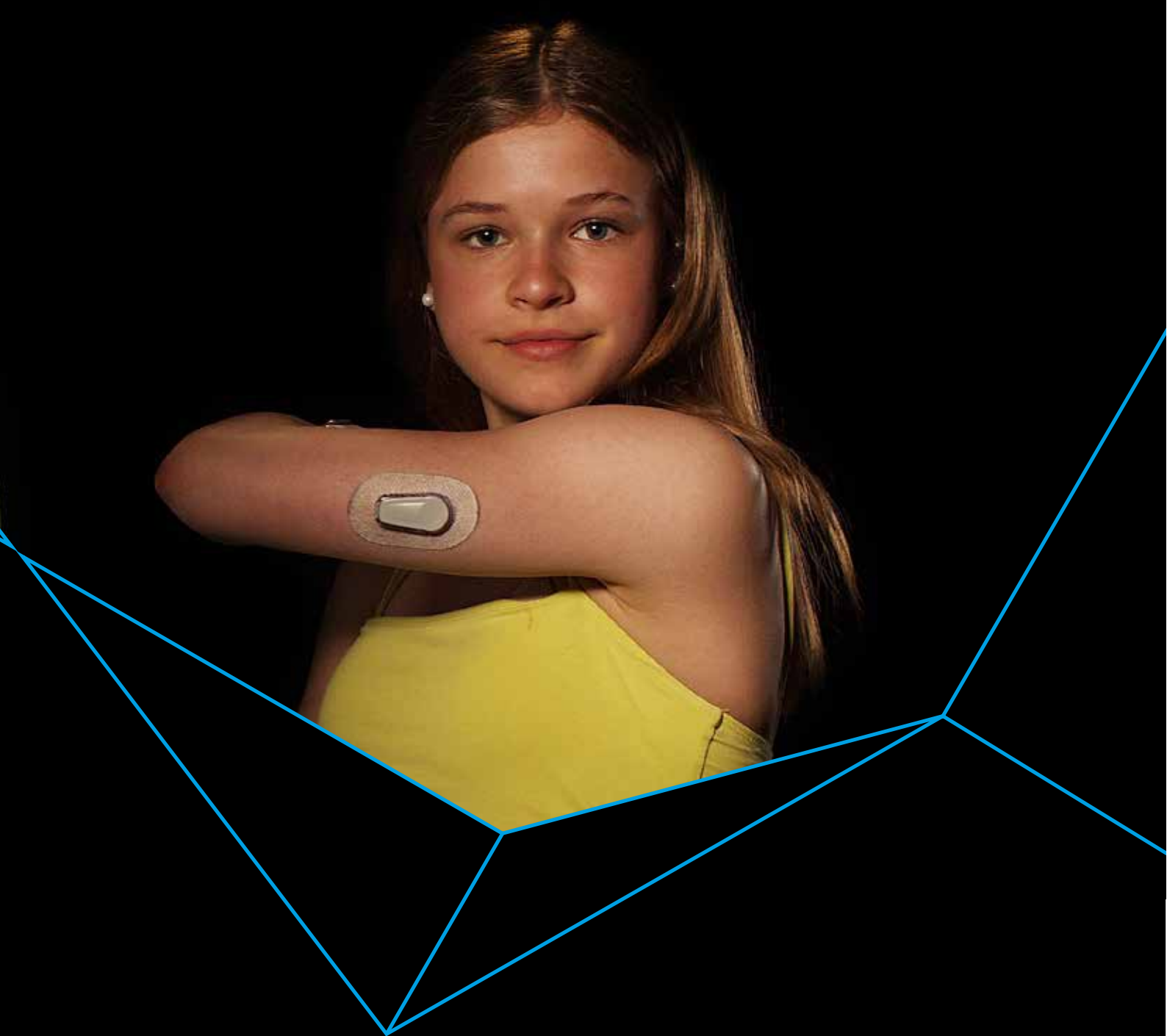


*For Customer success  
and a healthier planet*

Conheça nossas soluções em: [www.munters.com.br](http://www.munters.com.br)

**YOUR  
PERFECT  
CLIMATE**

 **Munters**  
Your Perfect Climate



# LIFE-CHANGING INNOVATIONS

Sometimes life changes in unexpected ways and you need help to live your everyday life with quality. Our solutions for the medical industry make that possible.

Our medical precision wire Exera® enables for people with diabetes to remotely monitor their blood sugar levels. It can also be used in hearing implants or deep brain stimulation devices.

Learn more at:  
[home.sandvik/life-changing-innovations](https://home.sandvik/life-changing-innovations)





**LABOR SOLUÇÕES EM ENGENHARIA**

Rua Josefina Arnoni, 280  
 Vila Irmãos Arnoni  
 São Paulo – SP CEP: 02374-050  
 Phone: +55 11 3522-3583  
 E-mail: celso@laborls.com  
 www.laborls.com  
 www.laborlifescience.com.br

LABOR SOLUÇÕES EM ENGENHARIA LTDA. was founded in 1987 with core business in High Voltage Maintenance equipment, in 1992 LABOR LIFE SCIENCE division was started and today is serving the food, beverage and pharmaceutical companies in Brazil with the ultimate and most innovative solutions for quality assurance and monitoring

**LABORATÓRIOS FERRING**

Praça São Marcos, 624, Vila Ida  
 São Paulo – SP CEP: 05455-050  
 Phone: +55 11 3024-7500  
 E-mail: eduardo.lopes@ferring.com  
<http://ferring.com.br>  
 Facebook: <https://www.facebook.com/ferringbrasil/>  
 LinkedIn: <https://www.linkedin.com/company/ferring-pharmaceuticals/>

Ferring Pharmaceuticals is a biopharmaceutical company based on research and development. Our goals are to identify, develop and commercialize innovative products in the fields of Human Reproduction, Urology, Gastroenterology, Endocrinology and Osteoarthritis. Ferring has been operating in Brazil for 27 years, with a Marketing and Sales model, and has around 100 employees in the country. The company also invests in innovation locally with two laboratories focused on Research and Development. Ferring for 70 years, building families worldwide and helping people live better lives.

**LEAX DO BRASIL**

Rua Francisco Galarda, 333  
 Araucária – PR CEP: 83706-493  
 Phone/Fax: +55 41 3641-6300  
 E-mail: marcelo.breis@leax.com  
 www.leax.com

LEAX Group is a leading manufacturer of mechanical components and subsystems for the heavy vehicle

industry, passenger cars, mining and construction and other engineering industries. LEAX do Brasil Ltda. is the group's first establishment in Latin America. In addition to Brazil, LEAX Group operates in Sweden, Latvia, Germany, Hungary and China, totalizing more than 1,200 employees and a turnover of more 1.5 billion SEK.

**LEMES CONSULTORIA**

Rua Primavera 55 Jardim Paulista  
 São Paulo – SP CEP: 01435-050  
 Phone: +55 11 9 8258-9005  
 E-mail: lemeswilson@yahoo.com.br  
 www.lemesconsultoria.com.br

Lemes Consultoria is a consulting firm aimed at businesses involving pharmaceutical, medical devices and health care.

**LINKÖPING UNIVERSITY**

Linköping – Östergötland  
 SE-581 83 Sweden  
 Phone: +46 13-28 10 00  
 Contact person: maria.engelmark@liu.se  
 www.liu.se

In close collaboration with the business world and society, Linköping University (LiU) conducts world-leading, boundary crossing research with emphasis on innovation, groundbreaking ideas and societal impact. Linköping University is part of the selected group of entrepreneurial universities dedicated to the development of an innovative culture in their institutions, the European Consortium of Innovative Universities (ECIU). In the same spirit, LiU offers many innovative educational programs, many of them with a clear vocational focus, leading to qualification as, for example, doctors, teachers, economists and engineers.

**LINNAEUS UNIVERSITY**

Universitetsplatsen 1  
 SE- 351 95 Växjö- Sweden  
 Phone: +46(0) 772-28 80 00  
 E-mail: info@lnu.se  
 www.lnu.se

Linnaeus University in south-eastern Sweden is an international university with 40,000 students. We offer the highest possible quality in education. Edu-

cation that helps you to actually make a difference in the world we live in. At Linnaeus University, you will find a rich academic offer with more than 50 degree programmes and 500 courses in English, on both bachelor's and master's level. Linnaeus University is located in two cities, Kalmar and Växjö, with nature just around the corner, adding to the quality of life during your studies.

#### LIQUID CONSULTING

Rua Enxovia, 472, cj. 1513, sala 5  
Phone: +55 11 3360- 6230  
E-mail: [johan.fager@liquidconsulting.com](mailto:johan.fager@liquidconsulting.com)  
[www.liquidconsulting.se](http://www.liquidconsulting.se)

By providing highly trained specialists for over 200 food producers in more than 50 countries, Liquid consulting has grown into a global pioneer in the processing and automation field. We work with

major companies from across the world because we understand the technological needs of the growing industrial processing and automation field.

#### LLYC - LLORENTE & CUENCA

Rua Oscar Freire, 379, 11º andar, cj. 111  
São Paulo - SP CEP: 01426-001  
Phone: +55 11 3060-3392  
E-mail: [anastri@llorenteycuenca.com](mailto:anastri@llorenteycuenca.com)

Ladeira da Glória, 26  
Rio de Janeiro - RJ CEP: 22211-12  
Phone: +55 11 3797-6400

LLYC - LLORENTE & CUENCA is the leading Communication and Public Affairs management consultancy in Latin America, Spain and Portugal. The team is made up of 22 partners, as well as 610 professionals who provide strategic communications consultancy ser-

# Adding new dimensions to your world

Ao combinar tecnologia inteligente e imaginação humana, a Axis adiciona novas dimensões de percepção, oportunidade e valor à vida das pessoas. Hoje, nossa oferta vai muito além das câmeras de rede, cobrindo um novo mundo de áreas de aplicação. E aqui está muito mais por vir na jornada em direção a um mundo mais inteligente e seguro.

[www.axis.com/about-axis](http://www.axis.com/about-axis)

**AXIS**<sup>®</sup>  
COMMUNICATIONS

vices to companies across all business sectors targeting the Spanish- and Portuguese-speaking markets. We currently operate in 13 countries through 16 offices.

#### **LOTIER**

Av das Nações Unidas, 12.399, Sala 75b  
Brooklin São Paulo – SP CEP: 04578-000  
E-mail: [anwar@lotier.com](mailto:anwar@lotier.com)  
Phone: +55 11 5505-0400  
[www.lotier.com](http://www.lotier.com)

Lotier is a company specialized in representing cutting edge technologies and services for the telecom, broadband, multimedia, TV & IT sectors. We act as our clients in-country business development, marketing and sales office with an experienced, technical staff, fully operational from day one.

As a result, our clients gain time to market, and their local customers get the benefit of local support and the easiness of dealing with a company they already know.

#### **LUND UNIVERSITY**

Stora Algatan, 4  
SE - 221 00 Lund - Sweden  
Phone: +46 46-222 14 66  
E-mail: [richard.stenelo@er.lu.se](mailto:richard.stenelo@er.lu.se)  
[www.lunduniversity.lu.se](http://www.lunduniversity.lu.se)

Lund University was founded in 1666 and has been a centre of culture and learning for more than 350 years. Today, it is one of Sweden's foremost universities, and among the top 100 universities in the world. As a world-leading research and innovation centre, the University is complemented by advanced scientific infrastructure, such as the ESS and MAX IV facilities. A large part of the University's success can be ascribed to its broad disciplinary range and its boundary-crossing education and collaboration. The University's other strengths include student influence, a high degree of internationalisation and close engagement with wider society.

#### **MAHA ENERGY**

Av João Cabral de Mello Neto, 400, sala 504/505  
Barra da Tijuca- RJ CEP: 22775-057  
Phone: +55 21 3554- 4305  
E-mail: [jonas@mahaenergy.ca](mailto:jonas@mahaenergy.ca)  
<http://www.mahaenergy.ca/>

Maha Energy Brasil is part of Maha Energy AB group. It is a Swedish public traded company. The Company was founded in 2013 in Calgary, Canada. In May 2016, the new group was formed with Maha Energy AB as parent company. The Company is traded on the Nasdaq First North stock exchange in Stockholm Sweden. The Company operates two oil fields in Brazil and one in Wyoming, U.S.

#### **MANEIRA ADVOGADOS**

Rua Oscar Freire, 379, cj. 131  
São Paulo - SP CEP: 01426-900  
Contact: Dr. Eduardo Maneira, Dr. Luis Eduardo Maneira and Dr. Pedro Henrique Ribas  
Phone: + 55 11 3062-2607 / +55 11 3062-6852  
E-mail: [eduardo@maneira.adv.br](mailto:eduardo@maneira.adv.br)  
[luiseduardo@maneira.adv.br](mailto:luiseduardo@maneira.adv.br)  
[pedro.ribas@maneira.adv.br](mailto:pedro.ribas@maneira.adv.br)  
[www.maneira.adv.br](http://www.maneira.adv.br)

Maneira Advogados was founded by professor and attorney Eduardo Maneira.

Besides being a national reference in Tax Law, it is also known for its highly-qualified practice in Civil Litigation and Corporate Law.

The firm assists clients from various market sectors such as, telecommunications, oil and gas, mining, energy etc., on their most complex, high-profile matters. Maneira Advogados has offices in Rio de Janeiro, São Paulo and Brasília, in Brazil.

#### **MAUGER MUNIZ ADVOGADOS**

Rua George Ohm, 206 – Torre B – 14º andar  
São Paulo – SP CEP: 04576-020  
Phone: +55 11 3755-0808  
E-mail: [contato@maugermuniz.com](mailto:contato@maugermuniz.com)  
[www.maugermuniz.com](http://www.maugermuniz.com)  
[#maugermunizadvogados](https://www.instagram.com/maugermunizadvogados)

MAUGER MUNIZ has experience in a broad range of sectors, including automotive, banking and financial services, telecom services and electronic industry, as well as FMCG industry and retail companies, amongst others. Our excellence is to provide legal services on a timely manner, cost-effective and personalized manner, in all areas of law, customized according to the needs of each client, with a great level of expertise, dedication, ethics and professionalism.

“Its client service style is renowned among the general counsel community as being open, direct, hands-on and available, but also impressively client-focused.”

Latin Lawyer 250



**VEIRANO**  
ADVOGADOS

## Results-oriented law practice

We practice law with business acumen and a focus on results, developing tailored solutions for multinational companies operating in strategic sectors of the economy.

Along the years, we have built strong relationships with leading companies in various industry sectors, simplifying international relations and opening pathways for business in Brazil, from Brazil to the world and from the world to Brazil.



Veirano Advogados

**BRAZIL**

Rio de Janeiro  
São Paulo  
Porto Alegre  
Brasília

**veirano.com.br**



**MAZARS CABRERA**

Rua Formosa, 367, 12º e 24º andar  
 São Paulo – SP CEP: 01049-911  
 Phone: +55 11 3524-4500  
 E-mail: relacionamento@mazars.com.br  
 www.mazars.com.br

Mazars is a leading international audit, tax and advisory firm. Operating as a united partnership, we work as one integrated team, leveraging expertise, scale and cultural understanding to deliver exceptional and tailored services in audit and accounting, as well as tax, financial advisory, consulting and legal services\*.

**MENTOR MEDIA**

Avenida Ferraz Alvim, 832  
 Diadema – SP CEP: 09980-025  
 Phone: +55 11 3195-3400  
 E-mail: Fernando\_rodrigues@mentormedia.com /  
 Ana\_ferreira@mentormedia.com  
 www.mentormedia.com

Mentor Media is part of Elanders group, a global supplier of integrated solutions in the areas of supply chain management, print & packaging and e-commerce.

**MÖLNLYCKE**

Rua Castilho, 392, 12º andar  
 Brooklin São Paulo – SP CEP: 04568-010  
 Phone: +55 11 3016-8900  
 E-mail: barbara.rocha@molnlycke.com  
 http://www.molnlycke.com.br/

Mölnlycke is a world-leading medical products and solutions company that equips healthcare professionals to achieve the best patient, clinical and economic outcomes. Our solutions start with a need. Patients and healthcare professionals inspire us to design medical solutions for wound management and pressure ulcer prevention. We want to enhance performance at every point of care – from the operating room to the home.

**MSL ANDREOLI**

Avenida Ibirapuera, 2332, Torre 1, 14º andar  
 São Paulo – SP CEP: 04028-002  
 Phone: +55 11 3169-9300  
 www.mslgroupandreoli.com.br

www.facebook.com/MSLAndreoli  
 www.instagram.com/MSL\_BRASIL/  
 @MSLANDREOLI

MSL is a global Public Relations of Publicis Groupe, the fifth largest communication group of the world with more than 100 offices in 40 countries. MSL is represented in Latin America by two main brands – MSL Andreoli and Publicis Consultants acting to provide companies strategic intelligence build influence and deliver the best reputational results. Headquartered in São Paulo, MSL Andreoli has a network of affiliates that cover all Latin America, offering a one-stop-shop portfolio of services, including strategic consultancy, reputation management, public affairs, crisis, consumer marketing, integrated digital and social media, corporate and brand citizenship among others.

**MUNTERS**

Rua Ladislau Gembaroski, 567 B  
 Araucária – PR CEP: 83707-090  
 Phone: +55 41 3317-5050  
 E-mail: mariovaldo.silva@munters.com  
 www.munters.com

Munters is a global leader in energy efficient air treatment solutions and air conditioning systems based on expertise in humidity and climate control technologies.

**NAHAS SOCIEDADE DE ADVOGADOS**

Av. Nove de Julho, 5143, cj 62  
 Jardim Paulista São Paulo – SP  
 CEP: 01407-200  
 Phone: +55 11 3060-4140  
 E-mail: adriana@nahasadvogados.com.br  
 www.nahasadvogados.com.br

The NAHAS LAW FIRM is a Brazilian legal office based in São Paulo, founded in 2015 with entrepreneurial spirit and expertise in the Innovation Ecosystem and the entertainment sector. In the entertainment sector they have good clients and concept bars, clubs and restaurants. This together create networking that has a strong fit with Swedcham's goals. Led by Dr. Rodrigo Bruno Nahas, has specialists in Corporate Law, Tax, Labor, Civil, Consumerist, Corporate and Contracts, both as advisory contentious legal advice.



**NATIONAL CORRETORA DE SEGUROS**

Rua Pajaú, 296  
 Vila Anhanguera São Paulo - SP  
 CEP: 04673-000  
 Phone: +55 11 5686-7154  
 E-mail: arthur@national.com.br  
 www.national.com.br

We are an insurance brokerage company that has been in the market for 30 years. We operate with insurance in several branches such as life insurance, health insurance, business insurance, home insurance and liability insurance. National Seguros invests in the modernization, qualification of its staff and the quality of service, offering the right product according to the profile of each client.

**NEFAB EMBALAGENS**

Rodovia Presidente Dutra S/N, KM 134 Galpão 07  
 Caçapava - SP CEP: 12286-160

Phone: +55 12 3657-1100  
 E-mail: info@nefab.com  
 www.nefab.com.br

The global network of experts in packaging and logistics Nefab provides its customers with services of international jurisdiction. Our packaging designs are combined with analysis of cost reduction, providing optimal solutions for your company and product.

**NORDIC WATER PRODUTOS PARA TRATAMENTO DE ÁGUAS**

Rua Domingos Rodrigues, 341  
 Lapa São Paulo - SP CEP: 05075-000  
 Phone: +55 11 4371-1152  
 E-mail: comercial@nordicwaterbr.com

We produce and market equipment for water treatment. Potable water, waste water and process water. Filtering from 50 mm down to 5 micron. Capacities up to 10 m3/sec. Company founded by Axel Johnsson 1975.



UM MUNDO MAIS  
 FORTE, LEVE E  
 SUSTENTÁVEL

**HARDOX®**  
 WEAR PLATE

**STRENX®**  
 PERFORMANCE STEEL

A SSAB, empresa nórdica de produção de aços, além de oferecer aços de alta resistência com uma qualidade incomparável, trabalha junto com você para assegurar que seu produto obtenha os melhores resultados possíveis.

O resultado? Aumento da produtividade através de equipamentos mais leves, com mais resistência e maior capacidade de carga.

T: +55 11 3303 0800

E: contactbrazil@ssab.com

www.ssab.com.br

**SSAB**

**NORTH TRADE BRASIL**

Av. Copacabana, 177, sala 43  
 Dezoito do Forte Barueri - SP CEP: 06472-001  
 Phone: +55 11 4688-0513  
[www.norvida.se](http://www.norvida.se)  
[www.naturkott.com](http://www.naturkott.com)

Norvida is the leading Nordic importer of branded meat products and the portfolio of products from South America is an important part of their business. Norvida has a separate sourcing office in São Paulo leading and coordinating the product flow into the Nordic market.

**NYNAS DO BRASIL**

Alameda Campinas, 463, 11º andar  
 São Paulo - SP CEP: 01404-902  
 Phone: +55 11 3939-4040 Fax: +55 11 3939-4069  
[www.nynas.com](http://www.nynas.com)

Nynas AB, incorporated in Sweden, is the parent company of an international group specializing in producing and marketing specialty oil products. Nynas is a business-to-business operation, based on non-commodity specialty oil products including technical service and application know-how. The production is largely based on heavy crude oil, which is upgraded to produce bitumen and naphthenic specialty oils.

**PACHECO NETO, SANDEN, TEISSEIRE ADVOGADOS**

Alameda Franca, 1050, 10º andar e 11º andar  
 São Paulo - SP CEP: 01422-001  
 Phone: +55 11 3897-4400  
 E-mail: [rpacheco@pnst.com.br](mailto:rpacheco@pnst.com.br)  
[www.pnst.com.br](http://www.pnst.com.br)

This office is a leading Brazilian law firm that provides legal advice to Brazilian and foreign clients. The firm provides quick and customized solutions in all legal aspects of business transactions, also to establish and maintain close working relationship with clients in order to guarantee an in-depth perspective that leads to tailor-made solutions to any given situation.

**PACWIRE AB**

Gunnebovägen, 1  
 SE - 860 35 Söråker - Sweden

Phone: +46 60 408 00  
 E-mail: [info@pacwire.se](mailto:info@pacwire.se)

Pacwire AB is one of the world's leading manufacturers of galvanized baling wire. Besides baling wire, we also offer a variety of auxiliary equipment. Our customers are in the pulp, textile fiber and recycling industries.

We specialise in the production of baling wire and possess unique know-how, which we are pleased to share with our customers. For example, we develop and tailor products and solutions in close co-operation with our customers.

**PARACEL S.A.**

Rua Alexandre Dumas, 1711, 5º andar  
 São Paulo - SP CEP: 04717-004  
 E-mail: [info@paracel.com.py](mailto:info@paracel.com.py)  
[www.paracel.com.py](http://www.paracel.com.py)  
[@paracelpy](#) (Linkedin / Facebook / Instagram / Tweeter / Youtube)

Paracel S.A. is a Paraguayan company, with capital sourced from national and international financial institutions, born with the aim of developing a unique project in the country: to build and operate a world-class Eucalyptus pulp mill; the largest private entrepreneurship in Paraguay's history, based on a sustainable production to contribute to the socio-environmental development of the country and the world, through the optimal use of resources and the integration of environmentally friendly solutions.

**PARTNERS CLUB ATIVIDADES DE INTERNET E PLATAFORMA DE NEGOCIOS LTDA**

R. Conde de Irajá, 142 cj 102 B  
 Phone: + 55 11 9 9380-1007 / +55 11 9 9594-1110  
 E-mail: [marcos.melo@partnersclub.net](mailto:marcos.melo@partnersclub.net) / [jp@partnersclub.net](mailto:jp@partnersclub.net)  
<https://en.partnersclub.net/>

Partners Club is a global business platform in which in which highly skilled companies and professionals, backed by a rigorous curatorship and meritocracy, provide specialized and unique solutions to corporations that can result in efficiency gains with direct bottom-line impact. Solutions span from Finance, Taxes, Insurance, Marketing, Sales, Business Development, Operations, and International Trade.

**PERFORMA PARTNERS**

Rua Surubim, 577, cj. 94  
 Brooklin São Paulo – SP CEP: 04571-050  
 Phone: +55 11 3814-4111  
 E-mail: [suzana.murray@performapartners.com](mailto:suzana.murray@performapartners.com) /  
[andre.pimentel@performapartners.com](mailto:andre.pimentel@performapartners.com)  
[www.performapartners.com](http://www.performapartners.com)  
<https://www.linkedin.com/company/performa-partners>

Consulting company that acts at critical moments in the business cycle of medium and large companies, supporting changes and effective results improvement, through an experienced and hands-on team in the execution of Restructuring, Turnaround and Performance Improvement projects.

In addition, it is an exclusive partner in Brazil for EIM Global, an European leader in Interim Management Solutions, enabling customers, through 22 offices in

18 countries, to access a global network of experienced professionals, ready to take on challenges as temporary or permanent executives at their organizations.

**PLINGPAY**

Dragonvägen, 4  
 SE - 237 32 Bjärred - Sweden  
 Phone: +46 739862121 / +55 21 99159-1866  
 E-mail: [info@plingpay.com](mailto:info@plingpay.com)  
[www.plingpay.com/](http://www.plingpay.com/)  
[www.plingpay.eu/](http://www.plingpay.eu/)

Send money with Plingpay!  
 Tired of slow and expensive money transfer solutions? Or ones that promise to be cheap but are not? Try Plingpay's award winning solution with the absolutely best rates in the market – Nothing added by anyone at anytime, and still guaranteed delivery in less than a banking day.

## Plataforma digital para Business Continuity, Segurança e Gestão de Crises.



[www.cosafe.com.br](http://www.cosafe.com.br)



# Realize your ambitions in Brazil



The opportunities in Brazil are vast and varied. As the leading Nordic corporate bank in the area we understand the unique challenges you face when looking for investment opportunities. As your partner, we will use our decades of experience in the Americas to craft specific advice based on your goals and find the optimal financial solution for you. Let us realize your ambitions.

[christian.rezende@seb.se](mailto:christian.rezende@seb.se)  
+55 11 3035 3795  
[sebgroupp.com/corporates-and-institutions](http://sebgroupp.com/corporates-and-institutions)

Care for ambition

**SEB**



# VOLVO FH CAMPEÃO EM TUDO

Na venda e na revenda.



O Volvo FH é o caminhão pesado campeão de vendas da década. Pela quinta vez, é reconhecido também por ter o maior valor de revenda.

Não é à toa que é o preferido das estradas.

**Volvo FH. Faz história.**





#### PQR MA2 ENGENHARIA & CONSULTORIA

Rua Machado de Assis, 544  
Vila Mariana – SP CEP: 04106-001  
Phone: +55 11 5579-0667  
www.pqrma2.com

CEO: Cristian Battocchio  
E-mail: cristian.b@pqrma2.com  
Phone: +55 11 9 9915-7432  
Skype: cristian.b@pqrma2.com

COO: Azarias Macedo Jr.  
E-mail: azarias@pqrma2.com  
Phone: +55 11 9 8266-2676

CFO: Johan Fager  
Phone: +55 11 9 9496-1800

PQR MA2 is the Brazilian filial of PQR International, a Sweden consulting services company in engineering and

integrated projects for electrical and hydraulic installations, fire protection, automation and air conditioning, mainly focusing on 3D projects in BIM environments. Since the merger with MA2, PQR strengthened, expand and improved the performance in the Brazilian market, adding the quality and international expertise of PQR to the portfolio and local experience of MA2, maintaining the mission of bringing innovative solutions to our clients, and increasing the quality and operational efficiency displayed by both companies. We provide global innovative engineering combined with creativity and experience to find solutions for your complete installation needs.

#### PRIMEWAY

Rua Dom Paulo Pedrosa, 720, cj.92  
São Paulo – SP CEP: 05687-001  
Phone: +55 11 3849-5500  
E-mail: oscar@primeway.com.br  
www.primeway.com.br

## Você sabe o que é marketing de influência?

A MSL, agência de relações públicas do Grupo Publicis, tem a resposta.

Pesquisa proprietária da **MSL** aponta que:



**46%**

dizem que burocracias dificultam o trabalho



**44%**

reclamam do processo de briefing



**41%**

consideram o processo de aprovação desgastante

Conheça o **Fluency**, uma plataforma **MSL** que combina o melhor da tecnologia e machine learning com expertise de mercado para levar o **relacionamento com influenciadores a um novo patamar**.

Contate-nos por meio do e-mail e número de telefone abaixo para conhecer mais sobre a ferramenta.

Primeway has more than ten years of experience in Internet development. Nowadays Primeway offers website development and maintenance services, e-Commerce projects, e-mail marketing and SEO employing the most advanced web technology.

#### **QUANT BRASIL MANUTENÇÃO INDUSTRIAL**

Rua Funchal 129, 4º andar, cj. 4B  
São Paulo - SP CEP: 04551-060  
Phone: +55 11 3046-3787  
[www.quantservice.com](http://www.quantservice.com)

Quant is a global leader in industrial maintenance. For over 28 years, we have been realizing the full potential of maintenance for our customers. From embedding superior safety practices and building a true maintenance culture, to optimizing maintenance cost and improving plant performance, our people make the difference.

We are passionate about maintenance and proud of ensuring we achieve our customers' goals in the most professional way.

#### **RH99 SISTEMAS**

Rua São Benedito, 509, cj. 101  
São Paulo - SP CEP: 04735-000  
Phone: +55 11 5687- 8826  
E-mail: [hello@rh99.com.br](mailto:hello@rh99.com.br)  
[www.rh99.br](http://www.rh99.br)

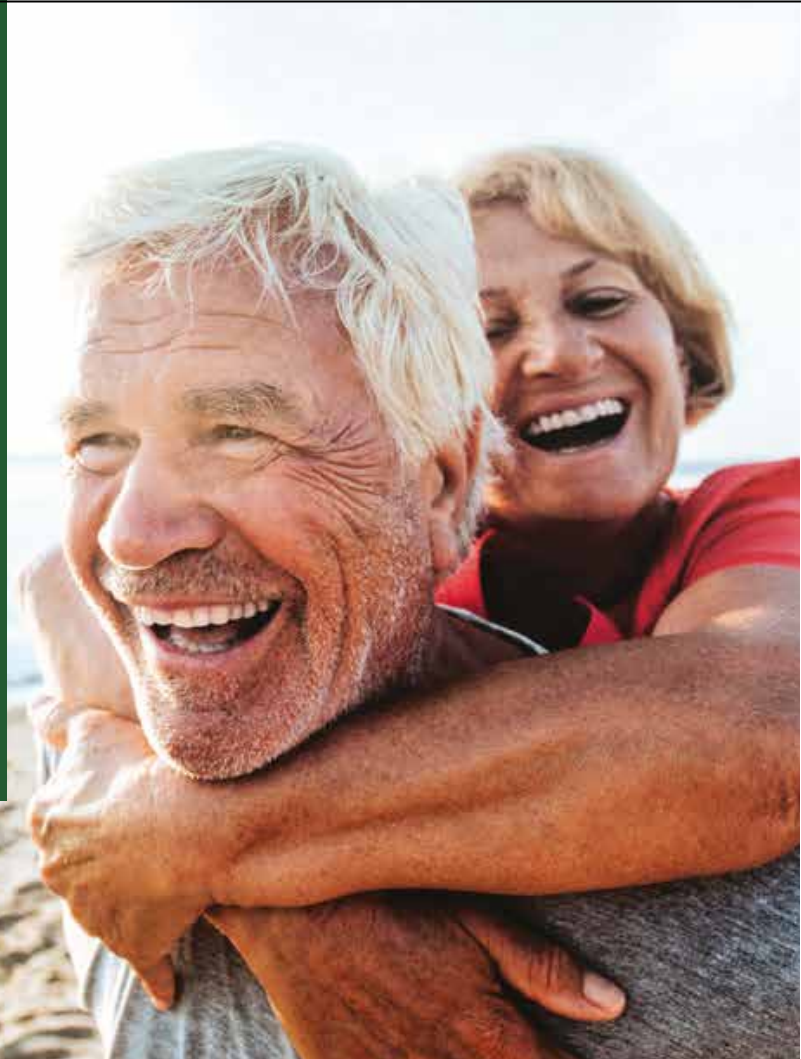
Exclusive representative in Brazil of the Swedish HumanGuide® evaluation system and concepts to assess motivation in the organizational context. Totally online, HumanGuide® provides a personality test and enables the performance of team chemistry analysis, a culture profile, the description of job profiles and the match between person profile and job profile. The system is very economic, quick and useful for the



## **Cuidados renais que melhoram vidas**

R. do Rócio, 291 - cj 92 - São Paulo - SP - Brasil  
CEP 04552-000 - Tel.: +55 11 2137-4408

[www.diaverum.com](http://www.diaverum.com)



strategic management of human capital. It can be customized to meet specific business and technical needs and specifications.

#### **RKKG CONSULTING**

Rua Itapicuru, 881, cj. 12  
São Paulo - SP CEP: 05006-000  
Phone: +55 11 9 8122-8612  
Contact: Andre Gildin  
E-mail: [andre.gildin@rkkgconsulting.com](mailto:andre.gildin@rkkgconsulting.com)  
[www.rkkgconsulting.com](http://www.rkkgconsulting.com)

Consulting firm, specialized in digital transformation projects, working with the development and implementation of innovation process, technology, strategy and marketing development and cultural changes, for small and medium companies and startups. We believe we can improve our customers positioning in the market, by bringing knowledge and delivering and executing projects for business growth.

#### **ROFF BRASIL – CONSULTORIA EM SISTEMAS INFORMAÇÃO**

Rua Surubim, 577, 17º andar, cj. 173 e 174  
Edifício Igarassu  
São Paulo – SP CEP: 04571-050  
Phone: +55 11 3081-9195  
[www.roff.com.br](http://www.roff.com.br)

ROFF is a global company focused on SAP consultancy, running projects in all technological areas of business support. With a staff of over 1000 and offices in 12 countries and 4 continents. ROFF runs SAP projects and provides SAP support in a 24x7 logic in English and Portuguese. ROFF is an SAP Services and Gold Channel Partner.

#### **SÃO PAULO CONVENTION & VISITORS BUREAU – VISITE SÃO PAULO**

Alameda Ribeirão Preto, 130, 12º andar  
São Paulo – SP CEP: 01331-000  
Phone: +55 11 3736-0600  
E-mail: [contato@visitesaopaulo.com](mailto:contato@visitesaopaulo.com)  
[www.visitesaopaulo.com](http://www.visitesaopaulo.com)

São Paulo Convention & Visitors Bureau is a non-profit organization financed by the private sector. Our mission is to promote, attract and generate

events in order to increase the flow of visitors to São Paulo.

#### **SAAB INTERNATIONAL BRASIL**

Rua Joaquim Floriano, 466, sala 903  
Ed. Corporate São Paulo - SP CEP: 04534-002  
Phone: +55 61 3327-9100 Fax: +55 61 3327-9111  
E-mail: [Brazil.office@saabgroup.com](mailto:Brazil.office@saabgroup.com)  
[www.saab.com/br](http://www.saab.com/br)

Saab serves the global market with world-leading products, services and solutions from military defence to civil security. Through innovative and collaborative thinking, Saab develops new technology to meet customers' changing needs. The 2014 contract to supply the Brazilian Air Force with the Gripen fighter was the biggest business deal in company's history, and solidified Saab's reputation in Latin America as a trustworthy partner. In Brazil, Saab has also delivered airborne early warning systems, training and simulation, ground-based air defense, as well as traffic management.

#### **SAAB AERONÁUTICA MONTAGENS (SAM)**

Rua Elisha Otis, 75 – Cooperativa  
São Bernardo do Campo – São Paulo  
Phone: +55 11 9 4796-5605  
E-mail: [naiara.cardoso@sam.br.saabgroup.com](mailto:naiara.cardoso@sam.br.saabgroup.com)  
[www.saab.com/br](http://www.saab.com/br)  
[facebook.com/saabdobrasil](https://facebook.com/saabdobrasil)  
[twitter.com/saabdobrasil](https://twitter.com/saabdobrasil)  
[youtube.com/saabdobrasil](https://youtube.com/saabdobrasil)

Saab Aeronáutica Montagens is Saab's aerostructures factory in Brazil. Located in a 5,000-sqm facility in the city of São Bernardo do Campo (SP), the factory will produce six complex structural parts aerostructures for the Gripen fighter, such as the tail cone, aerodynamic brakes, wing box, front fuselage for the single-seat and two-seat versions and the rear fuselage for the single-seat version of the aircraft. The plant installation started in 2018 and operations began in 2020. The aerostructures plant is part of Saab's global footprint.

#### **SANDVIK**

Avenida João Paulo da Silva, 258  
Vila da Paz São Paulo – SP CEP: 04777-020  
Phone: +55 11 5660-3170  
[www.sandvik.com/br](http://www.sandvik.com/br)



# A inovação nos inspira



United. Inspired.

Trabalhamos todos os dias para levar aos nossos clientes e parceiros soluções em produtividade, que garantam o sucesso de hoje e a liderança do amanhã. Não medimos esforços quando o assunto é inovação e desenvolvemos equipamentos com tecnologia de ponta destinados à mineração e construção, além de peças, serviços e consumíveis de classe mundial.



[www.epiroc.com/pt-br](http://www.epiroc.com/pt-br)

Sandvik is a high-tech and global engineering Group with about 42,000 employees with a strong commitment to enhancing customer productivity, profitability and safety.

Our operations are based on unique expertise in materials technology, extensive knowledge about industrial processes and close customer cooperation. This combination, coupled with continuous investments in research and development (R&D), has enabled us achieve world-leading positions in the selected areas.

#### **SBHCI – SOCIEDADE BRASILEIRA DE CARDIOLOGIA INTERVENCIONISTA**

Rua Beira Rio, 45, cj. 74

Phone: +55 11 9 7673-3696

E-mail: [gerencia@sbhci.org.br](mailto:gerencia@sbhci.org.br)

[www.sbhci.org.br](http://www.sbhci.org.br)

Facebook: [@sbhicardiolgia](https://www.facebook.com/sbhciocardiolgia)

Instagram: [@sbhci](https://www.instagram.com/sbhci)

SBHCI is a non-profit organization aimed at:

- Gathering physicians and other healthcare professionals interested in interventional cardiology;
- Ensure ethics and technical efficacy in professional practice;
- Foster scientific and technological research;
- Promote scientific meeting;
- Promote update courses;
- Regulate the granting of specialist title;
- Maintain scientific an association exchange with peer entities

#### **SCANDINAVIAN CHURCH**

Rua Job Lane, 1030

São Paulo – SP CEP: 04639-001

Phone: +55 11 5687-8829

E-mail: [info@scandinavianchurch.org.br](mailto:info@scandinavianchurch.org.br)

[www.scandinavianchurch.org.br](http://www.scandinavianchurch.org.br)

[www.espacoescandinavo.com.br](http://www.espacoescandinavo.com.br)

The Scandinavian Church of São Paulo has for over 50 years been a natural meeting point for Scandinavians living in São Paulo.

The Scandinavian Church was built in 1974 by the Nordic Community in São Paulo to serve as a religious, cultural and social meeting point for the Nordic Community to come together to celebrate their Lutheran Faith and Nordic Heritage. It is situated

on a beautiful plot with a tranquil garden in Jardim Petrópolis – SP.

#### **SCANIA LATIN AMERICA**

Avenida José Odorizzi, 151, Vila Euro

São Bernardo do Campo – SP CEP: 09810-902

Phone: +55 11 4344-9333

[www.scania.com](http://www.scania.com)

Scania is a world leading provider of sustainable transport solutions. The plant established in São Bernardo do Campo (SP) was its first production unit outside Sweden. Producing heavy trucks, buses and industrial and maritime engines for 63 years in Brazil, Scania, together with its customers and partners is driving the shift towards a sustainable transport system.

#### **SEB SÃO PAULO REPRESENTATIVE OFFICE**

Avenida Brigadeiro Faria Lima, 1461, cj.71, Torre Sul

São Paulo – SP CEP: 01452-921

Phone: +55 11 3035-3795 Fax: +55 11 3035-3799

E-mail: [christian.rezende@seb.se](mailto:christian.rezende@seb.se)

SEB is a Nordic, German and UK Corporate & Investment bank headquartered in Stockholm. The SEB office in São Paulo has been operating for 48 years in the Brazilian market, with a strong focus on financing the Brazilian subsidiaries of our Nordic, UK and German corporate clients. SEB has also a long-standing tradition in International Trade Finance business with Brazilian banks.

#### **SEBRATEC**

Rua Oscar Freire, 379, 12º andar

São Paulo – SP CEP: 01426-001

Phone: +55 21 9 8441- 1011 / +55 11 9 5232 - 0476

E-mail: [elis.hansen@sebratec.com](mailto:elis.hansen@sebratec.com)

[www.sebratec.com](http://www.sebratec.com)

<https://www.instagram.com/sebratec/>

<https://www.facebook.com/sebratec/>

Sebratec is a Swedish Engineering Tech company with focus on recruitment, consulting and software development. With offices both in Gothenburg and São Paulo, they deliver expertise to prestigious clients like Volvo Cars, SKF, CEVT and Scania. With the vision to work as a bridge between Brazil and Sweden, Sebratec has the aim of integrating professionals and sharing knowledge from both countries.



**SECO TOOLS**

Av. John Boyd Dunlop, 1500, galpão 1  
 Sorocaba – SP CEP: 18087-155  
 Phone: +55 15 2101-8600 Fax: +55 15 2101-8606  
 E-mail: [secoadm@secotools.com](mailto:secoadm@secotools.com)  
[www.secotools.com](http://www.secotools.com)

With a reputation for product innovation and applications expertise, Seco Tools is a leading global provider of metal cutting solutions for milling, turning, holmaking and tool holding. The Brazilian branch has a complete structure of services and a high-quality factory for custom tooling products giving solutions for all customers specific needs.

**SEMCON DO BRASIL**

Av. Nações Unidas 179, Jd. do Mar  
 São Bernardo do Campo – SP CEP: 09726-110  
 Phone: +55 11 4121-6684  
 E-mail: [comercial@semcon.com](mailto:comercial@semcon.com)  
[www.semcon.com](http://www.semcon.com)

Semcon is an international technology company with more than 2,200 employees in eight different countries. We help our customers in transforming technology into excellent user experiences by uniting premium physical and digital solutions.

We put people first. As far as we are concerned, technology has no purpose of its own – it's the value it adds to people and our planet that is most important. By uniting physical and digital solutions, we create user experiences that matter.

Semcon has more than 30 offices located in Sweden, UK, Norway, Germany, Hungary, Brazil, China and India. We are organised in two business areas: Engineering & Digital Services and Product Information.

**SIGMA IT GROUP**

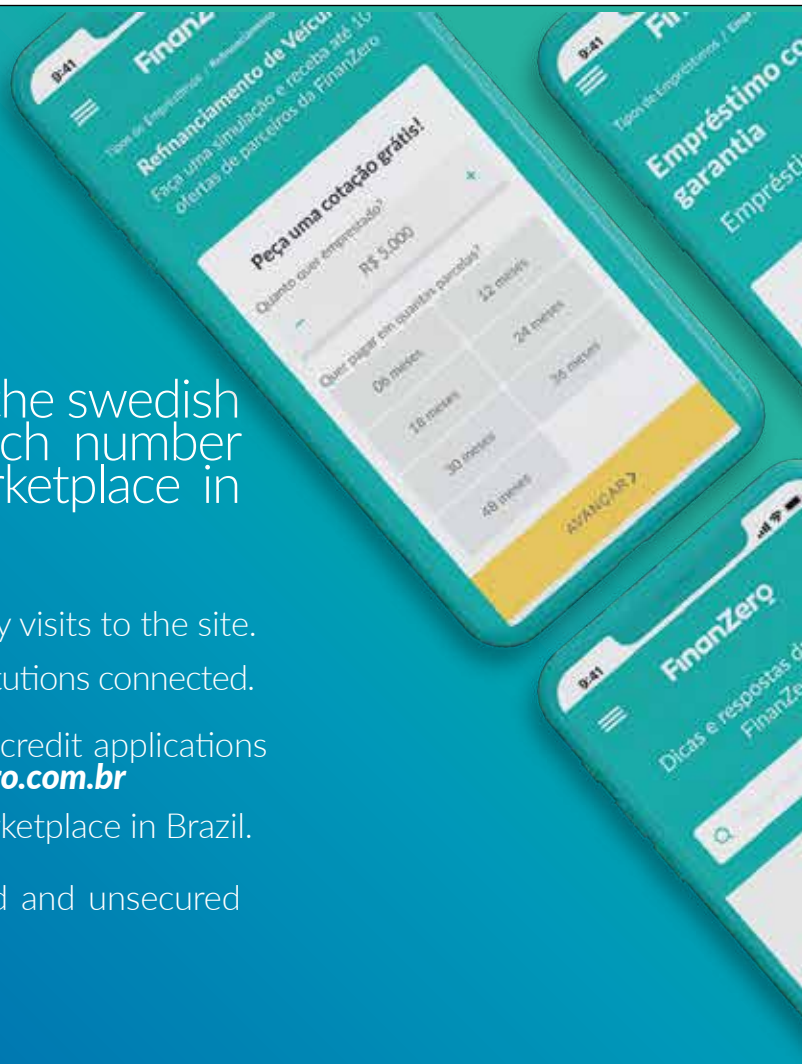
Lindholmspiren 9  
 SE - 417 56 Gothenburg Sweden  
 Phone: +46 70216 4254  
 Contact: Stefan Johnston – CFO Sigma IT Group AB  
 E-mail: [stefan.johnston@sigma.se](mailto:stefan.johnston@sigma.se)

# FinanZero



**FinanZero** is the swedish brazilian fintech number one loan marketplace in Brazil!

- ✓ 3 million monthly visits to the site.
- ✓ 40 financial institutions connected.
- ✓ Over 10 million credit applications through **[finanzero.com.br](http://finanzero.com.br)**
- ✓ Largest loan marketplace in Brazil.
- ✓ Offering secured and unsecured loans.



Primary contact: Jonas Steffensson – CEO Sigma  
Enterprise Applications  
E-mail: [jonas.steffensson@sigma.se](mailto:jonas.steffensson@sigma.se)

Contact: Lars Kry – CEO Sigma IT Group AB  
E-mail: [lars.kry@sigma.se](mailto:lars.kry@sigma.se)  
[www.wearesigmait.com](http://www.wearesigmait.com)

We are a strong and fast growing IT consulting company, helping our customers with innovative solutions every day. In Brazil our main focus are specialists in delivering business systems based on Microsoft Dynamics. We increase our customers insight into their business and make them more productive, efficient and more profitable. By understanding the customer's processes and business, we deliver a Microsoft Dynamics business system that provides employees with the right information at the right time and so giving them the ability to perform their duties better and more efficiently. We

can do this with local expertise combine with our global strength.

#### **SIGN CONSULTORIA EMPRESARIAL**

Rua Helena, 285, Cjs. 43/45  
São Paulo - SP CEP: 04552-050  
Phone: +55 11 2638-9710  
E-mail: [manhesini@signadvisory.com.br](mailto:manhesini@signadvisory.com.br)  
[rmolina@signadvisory.com.br](mailto:rmolina@signadvisory.com.br)  
[www.signadvisory.com.br](http://www.signadvisory.com.br)

SiGN AUDIT & ADVISORY & OUTSOURCING is focused on providing differentiated services to its clients. This differentiation comes from its long lasting leadership in the market, with more than 25 years of experience in AUDIT, CONSULTING, TAX AND OUTSOURCING, as well as the maintenance of a team of experienced and highly qualified employees to offer quality solutions to its clients, considering the needs and characteristics of each organization.

# LLYC

## EMBRACE THE NEW NORMAL

ANTECIPE-SE



**SKF**

Rodovia Anhangüera, Km 30  
 Cajamar – SP CEP: 07770-000  
 Phone: +55 11 4448-8200 Fax: +55 11 4448-8696  
 E-mail: [carisma@skf.com](mailto:carisma@skf.com)  
 CaRisMa - 0800 014 11 52  
[www.skf.com.br](http://www.skf.com.br)

We are focused in helping our customers achieve even more success in their business by delivering a full offer around the rotating shaft, where the bearing is the core component, complementing with technologies such as sealing, lubrication and condition monitoring.

**SOUTHPARTNER**

Alameda Lorena, 800, cj. 910  
 São Paulo – SP CEP: 01424-001  
 Phone: +55 11 3887-5000  
 E-mail: [mail@southpartner.com](mailto:mail@southpartner.com)  
[www.southpartner.com](http://www.southpartner.com)

Rio de Janeiro – Brazil  
 Av. Jose Silva de Azevedo Neto, 200  
 02 Corporate & Offices – Bloco 7 Ecology – sala 217,  
 Barra da Tijuca – RJ CEP: 22775-056  
 Phone: 0800-878 2487 (Brazil)  
 E-mail: [Rio@southpartner.com](mailto:Rio@southpartner.com)

Atlanta – USA  
 575 Pharr Rd NE – Unit # 11703  
 Atlanta GA 30355-6000  
 USA  
 Phone: +1 404 920 4620  
 E-mail: [atlanta@southpartner.com](mailto:atlanta@southpartner.com)

Stockholm – Sweden  
 Hugo Oljemark, Associate Partner  
 Oljemarks, Box 1622  
 Täby SE-183 16  
 Sweden  
 Phone: +46 70 323 6060  
 E-mail: [stockholm@southpartner.com](mailto:stockholm@southpartner.com)

**Tornando-se CO<sub>2</sub> neutro até 2025**

Na Getinge, somos apaixonados pela vida e comprometidos em contribuir para uma assistência à saúde e uma sociedade mais sustentáveis. Por isso, a Getinge pretende tornar-se neutra na emissão de CO<sub>2</sub> até 2025. Nosso trabalho é guiado pela convicção de que uma empresa responsável contribui para aumentar o valor de nossos clientes e da sociedade em geral.

[www.getinge.com/br](http://www.getinge.com/br)



**GETINGE** 



Southpartner supports and represents local companies that want to go global, and international companies that want to enter the South American market. Our portfolio includes New Business Ventures & Start-ups, Local Operations, JVs, M&As, Market Entry Strategies, Business Development, Channel Management, Legal Support, distribution and commercial representation. Areas of expertise include ICT, IoT, AI, Big Data, AgTech, and Forestry.

#### **SSAB SWEDISH STEEL COM DE AÇO**

Rod. BR 280, S/N, Km 34, Cx. Postal 36  
Corveta - Araquari SC - Brasil CEP: 89245-000  
Phone: +55 11 3303-0800  
E-mail: [contactbrazil@ssab.com](mailto:contactbrazil@ssab.com)  
[www.ssab.com.br](http://www.ssab.com.br)

SSAB is a highly-specialized global steel company driven by close relationships with our customers. SSAB develops high-strength steels and provides services for better performance and sustainability.

#### **STARSPRINGS DO BRASIL**

Matriz: Rua José Leal de Oliveira, 404  
Araucária - PR CEP: 83707-114  
Phone: +55 41 3204-7000 Fax: +55 41 3204-7001  
E-mail: [bernardino.sena@starsprings.com](mailto:bernardino.sena@starsprings.com)  
[www.starsprings.com](http://www.starsprings.com)

Filial: Avenida Ville, Quadra 27, Lote 01, Sala 02  
Residencial Center Ville  
Goiânia - GO CEP: 74369-023  
Phone: +55 62 9 8283-0909  
E-mail: [Nickson.cabral@starsprings.com](mailto:Nickson.cabral@starsprings.com)

Starsprings is the leading manufacturer in Scandinavia of spring units for excellence in comfort for mattresses and seats. Innovative company supplies the market with high quality products and competitive prices. Our products are applied in mattresses, chairs, sofas and also automotive industries, like Volvo, Scania and Renault. Factories: Located in Sweden, Brazil, United States and Poland. Vision: is to be market and technique leader within bed and seat comfort.

#### **STEFANINI**

Av. Marginal, 156  
Jaguariúna - SP CEP: 13820-000  
Phone: + 55 11 3039-2000

E-mail: [stefanini@stefanini.com](mailto:stefanini@stefanini.com)  
[www.stefanini.com.br](http://www.stefanini.com.br)  
<https://www.linkedin.com/company/stefanini-brasil/mycompany/>

Stefanini Group is a global company with 33 years of experience in the market, offering a robust selection of services such as automation, cloud, Internet of Things (IoT) and user experience (UX). The Brazilian multinational provides a broad portfolio of digital solutions, combining innovative consulting, marketing, banking, mobility, personalized campaigns and artificial intelligence services. Stefanini believes technology can revolutionize a company and innovation is essential to foster development and competitiveness.

#### **STOCKHOLM SCHOOL OF ECONOMICS**

Sveavägen, 65  
SE- 113 83 Stockholm- Sweden  
Phone: + 46 8 736 90 00  
[www.hhs.se](http://www.hhs.se)

The Stockholm School of Economics (SSE) is the leading business school in Northern Europe. For more than a century, SSE has educated talented women and men for leading positions within the business community and the public sector.

SSE offers bachelors and master's degree programs along with highly regarded PhD, MBA and executive education programs. SSE has earned a reputation for excellence both in Sweden and around the world. The School is accredited by EQUIS (European Quality Improvement System) certifying that all of its main activities, teaching as well as research, are of the highest international standards. SSE is also the Swedish member institution of CEMS (The Global Alliance in Management Education) and PIM (Partnership in International Management).

#### **STORA ENSO**

Rua Doutor Eduardo de Souza Aranha, 387, 6º andar, cj.61  
Vila Nova Conceição - SP CEP 04543-121  
Phone: +55 11 3065-5200 Fax: +55 11 3065-5214  
E-mail: [vendas.brasil@storaenso.com](mailto:vendas.brasil@storaenso.com)  
[www.storaenso.com](http://www.storaenso.com)

Stora Enso is a leading provider of renewable solutions in packaging, biomaterials, wooden constructions and paper on global markets. Our customers include



A close-up photograph of a welder wearing a white helmet with a red stripe and a yellow face shield. The welder is working on a metal component, and bright sparks are visible from the welding process. The background is dark and out of focus, showing some industrial structures.

**QUANT**<sup>TM</sup>

# **The global leader in industrial maintenance**

## **SMART SERVICES FOR A SUSTAINABLE WORLD**

From embedding superior safety practices and building a true maintenance culture, to implementing state of the art digital tools to optimise cost and productivity , our people make the difference.

We have extensive knowledge in various industries and actively share our best practices around the world.

Our experience covers more than 300 sites, in which we have changed the role of maintaining a cost center to a value generator for our customers.

**[www.quantservice.com](http://www.quantservice.com)**

publishers, retailers, brand owners, print and board producers, printing houses, merchants, converters and joineries and construction companies.

We use and develop our expertise in renewable materials to meet the needs of our customers and many of today's global raw material challenges. Our products provide a climate-friendly alternative to many products made from non-renewable materials and have a smaller carbon footprint.

Being responsible – doing good for the people and the planet – underpins our thinking and our approach in every aspect of business.

### STORYTEL

Avenida Pedroso de Morais, 251, cj 41/42

São Paulo – SP CEP: 05419-000

Phone: +55 11 3032-4021

E-mail: [andre.palme@storytel.com](mailto:andre.palme@storytel.com)

[www.storytel.com](http://www.storytel.com)

Instagram @storytelbrasil

Storytel is Northern Europe's leading audiobook and e-book streaming service and offers unlimited listening and reading of more than 200,000 titles on a global scale. Its vision is to make the world a more empathetic place with great stories to be shared and enjoyed by anyone, anywhere and anytime. Storytel is a digital platform provider as well as a comprehensive publishing group. The streaming business area offers subscriptions for audiobooks and e-books under the Storytel and Mofibo brands. Storytel operates in 20 markets around the globe and is headquartered in Stockholm, Sweden.

### SVEA LANGUAGE

E-mail: [svealanguage@gmail.com](mailto:svealanguage@gmail.com)

Swedish Language School.

Our focus is to teach Swedish for people who are about to move to Sweden and need to learn fast. Our teacher is native and has over 10 years of experience in teaching Swedish for foreigners.

We also offer Cultural Training and lessons in - company.

### SWEDISH MATCH

Av. das Américas, 3500, Ed. Londres – 213

Barra da Tijuca Rio de Janeiro – RJ CEP: 22640-102

Phone: +55 21 2227-9600

E-mail: [contato@swedishmatch.com.br](mailto:contato@swedishmatch.com.br)

[www.swedishmatch.com.br](http://www.swedishmatch.com.br)

[www.fiatlux.com.br](http://www.fiatlux.com.br)

In Brazil, Swedish Match manufactures and markets Fiat Lux matches and Cricket disposable lighters – with factories in Curitiba and Manaus respectively, both exporting to Latin America.

The Brazilian commercial unit also sells batteries, LED lamps, disposable razors, fire starters, candles and cloth pegs.

### SYSTEMAIR

Industrivägen 3

SE-739 30 Skinnskatteberg – Sweden

Phone: +46 222 440 00 Fax: +46 222 440 99

Contact: Olle Glassel

[www.systemair.com](http://www.systemair.com)

Systemair Traydus Climatização Indústria e Comércio Ltda.

Rua Prefeito José Carlos, 2000

Itupeva – SP

Phone: + 55 11 4591-7020

Contact: Ricardo Facuri

Mobile: + 55 11 9 9326 4210

E-mail: [ricardo.facuri@systemair.com](mailto:ricardo.facuri@systemair.com)

Skype: ricardo.facuri

[www.systemair-traydus.com.br](http://www.systemair-traydus.com.br)

Simple, reliable & effective

Systemair is a leading ventilation company with operations in 50 countries globally. We manufacture and market high-quality ventilation products.

### TALENTO SEGUROS

Rua Pereira Stefano, 114, cj. 603

São Paulo – SP CEP: 04144070

Phone: +55 11 3258-3489

E-mail: [adriana@talentoseguros.com.br](mailto:adriana@talentoseguros.com.br)

<http://www.talentoseguros.com.br/>

Talento Corretora de Seguros is a company that provides consulting services in the health plan and insurance areas. You will receive precise information to contract Health and Dental Plans, Life and Auto Insurance, elementary areas.



**TETRA PAK**

Av. das Nações Unidas, 4777, 10º andar  
Ed. Villa Lobos  
São Paulo – SP CEP: 05477-000  
Phone: +55 11 5501-3200  
E-mail: [info.br@tetrapak.com](mailto:info.br@tetrapak.com)  
[www.tetrapak.com.br](http://www.tetrapak.com.br)

Tetra Pak is a world's leading food processing and packaging solutions company. Working closely with customers and suppliers, it provides safe, innovative and environmentally sound products that each day meet the needs of hundreds of millions of people in more than 160 countries. With more than 24,000 employees around the world, Tetra Pak arrived in Brazil in 1957 and believes in responsible industry leadership and sustainable approach to business. The motto, "PROTECTS WHAT'S GOOD™", reflects the vision to make food safe and available everywhere.

**THE ECONOMIST INTELLIGENCE UNIT BRAZIL**

Rua Joaquim Floriano, 1052, 8º andar  
Itaim Bibi São Paulo – SP CEP: 04534-004  
Phone: +55 11 3073-1186  
E-mail: [marciozanetti@eiu.com](mailto:marciozanetti@eiu.com)  
[www.eiu.com](http://www.eiu.com)  
@TheEIU  
<https://www.facebook.com/TheEIU/>  
<https://www.linkedin.com/company/3506428/>  
<https://www.youtube.com/user/EIUMedia>

The EIU is a leading provider of country, industry and management analysis. We help business leaders prepare for opportunity, empowering them to act with confidence when making strategic decisions. Our forecasting and advisory services have informed entrepreneurs, financiers and government figures around the world since 1946. Our analysts are of the highest calibre, determined to seek out the facts that will steer their analytical thinking. Our clients tell us they value our integrity above all else.

# GO GLOBAL!

## *Turn Your Global Potential into Reality*

We support and represent local companies that want to go global, and international companies that want to enter the South American market.

f in @ /southpartner

+55 11 3887 5000  
[southpartner.com](http://southpartner.com)



# Southpartner

**THULE**

Rua Aristodemo Polli, 20  
Itupeva – SP CEP: 13295-000  
Phone: +55 11 4593-9595  
E-mail: [per.henricson@thule.com](mailto:per.henricson@thule.com)  
[www.thule.com.br](http://www.thule.com.br)

Thule offers solutions for transporting your sport and travel gear easily, safely and in style, helping you having an active life, simplified.

**TM & PARTNERS**

Sweden  
Jakobs Torg 3  
SE-111 52 Stockholm  
Phone: +46 8 400 283 05  
E-mail: [sten.hedback@tmpartners.se](mailto:sten.hedback@tmpartners.se)  
[www.torngrenmagnell.com](http://www.torngrenmagnell.com)

Brazil  
Al. Santos, 1940, 3º andar  
São Paulo – SP CEP: 01418-200  
Phone: +55 11 4063-6693  
E-mail: [otavio.lucchese@tmpartners.se](mailto:otavio.lucchese@tmpartners.se)  
[www.torngrenmagnell.com](http://www.torngrenmagnell.com)

As the first Nordic law firm to set up a Brazil Desk, Törngren Magnell aims at providing legal support to Brazilian companies already conducting business in or planning to enter the Swedish market as well as to Swedish companies already acting on or planning to establish themselves on the Brazilian market.

**TOZZINI FREIRE ADVOGADOS**

Pedro G. Seraphim  
Rua Borges Lagoa, 1328  
São Paulo – SP CEP: 04038-904  
Phone: +55 11 5086-5000 Cel: +55 11 98345-3078  
E-mail: [pseraphim@tozzinifreire.com.br](mailto:pseraphim@tozzinifreire.com.br)  
[www.tozzinifreire.com.br](http://www.tozzinifreire.com.br)

Since 1976, Tozzini Freire has distinguished itself as a premier, full-service law firm by consistently providing legal services to domestic and international companies in a wide variety of business sectors. Along these years, we have played a major role in many of the most significant transactions in the Brazilian market. With national coverage and fully-owned offices in several cities in Brazil, Tozzini Freire guarantees the

same outstanding services and one-firm resource throughout the country.

**TRELLEBORG WHEEL SYSTEMS**

Avenida Prefeito João Vila-Lobos Quero, 1960  
Jardim Belval Barueri – SP CEP: 06422-122  
Phone: +55 11 2802- 9263  
E-mail: [info.tws.sa@trelleborg.com](mailto:info.tws.sa@trelleborg.com)  
[www.trelleborg.com/wheelsystems](http://www.trelleborg.com/wheelsystems)

Trelleborg is a world leader in engineered polymer solutions that seal, damp and protect critical applications in demanding environments. Our innovative engineered solutions accelerate performance for customers in a sustainable way. The Trelleborg Group has local presence in over 50 countries around the world. Trelleborg Wheel Systems is a leading global supplier of tires and complete wheels for agricultural machines, material handling, construction vehicles, motorcycles, bicycle and other specialty segments. It offers highly specialized solutions to create added value for customers and is partner of the leading Original Equipment Manufacturers.

**U&WE**

Stora Nygatan, 45  
SE-11127 Stockholm – Sweden  
Phone: +46 8 34 65 65  
E-mail: [info@uandwe.se](mailto:info@uandwe.se)  
[www.uandwe.se](http://www.uandwe.se)

U&WE is a consulting group with broad knowledge of sustainability and cutting-edge competence within environmental science and sustainability-driven business development. It supports its clients to increase their competitiveness while contributing to sustainability. Many of its customers are leaders within their industry and role models for other companies. U&WE started in 1995 and works in Sweden, Brazil and Chile.

**UMEÅ UNIVERSITY**

SE-901 87 Umeå- Sweden  
Phone: +46 90-786 50 00  
E-mail: [lennart.johansson@umu.se](mailto:lennart.johansson@umu.se)  
<http://www.umu.se/>

Umeå University was founded in 1965 and is Sweden's fifth oldest university. Umea University is a comprehensive university with about 34.000 students and 2100 researchers and teachers. A vital environment



for studies and research with a strong international presence of students, teachers and researchers from all over the world.

### UNIVERSITY WEST

Gustava Melins gata 2  
SE-461 86 Trollhättan - Sweden  
Phone: +46 520 22 30 00  
E-mail: tomas.bengtsson@hv.se  
www.hv.se

University West is a dynamic university with a clear focus on education and research of high international quality. It is particularly well known for its focus on work-integrated learning. It offers international programs at both the bachelor's and master's level in a range of fields across social sciences, engineering and IT.

### UPPSALA UNIVERSITY

SE-75105 Uppsala - Sweden  
Box 256  
Phone: +46 18 471 0000  
E-mail: registrator@uu.se  
www.uu.se

The first university in Sweden founded in 1477, with a living cultural environment and extraordinary student life. World-class research and high-quality education pursued here benefit society and business on a global level. The University is characterized by diversity and breadth, with international frontline research at nine faculties and limitless educational offerings at Bachelor's and Master's levels.

### VALMET

SE- 651 15 Karlstad - Sweden  
Phone: +46 54 17 10 00  
E-mail: tissue.info@valmet.com  
www.valmet.com

Valmet Corporation is the leading global developer and supplier of technologies, automation and services for the pulp, paper and energy industries. Valmet's vision is to become the global champion in serving its customers.

### VECSA INTERNATIONAL

Rua Charles Darwin, 480  
São Paulo - SP CEP: 04379-074

Phone: +55 11 5506-9307  
Whatsapp: + 55 11 9 6476-7990  
E-mail: contato@vecsa.com.br  
www.vecsa.com.br  
www.troax.com / www.asafe.com

Official Troax, A-Safe and Fichet-Bauche Distributor. Specialized in safety solutions. Steel mesh panel systems; advanced industrial polymer barriers; certified valuables protection.

### VEIRANO ADVOGADOS

E-mail: contact@veirano.com.br  
Site: www.veirano.com.br

Rio de Janeiro  
Av. Presidente Wilson, 231, 25º andar  
Rio de Janeiro - RJ CEP: 20030-021  
Phone: +55 21 3824- 4747 Fax: +55 21 2262- 4247

São Paulo  
Av. Brigadeiro Faria Lima, 3477, 16º andar  
São Paulo - SP CEP: 04538-133  
Phone: +55 11 2313- 5700 Fax: +55 21 2262- 4247

Porto Alegre  
Av. Dr. Nilo Peçanha 2900 - 15º andar  
Porto Alegre - RS CEP: 91330-001  
Phone: +55 51 2121- 7500 Fax: +55 21 2262- 4247

Brasília  
SCS Qd. 9 Lt. C  
Ed. Parque Cidade Corporate - Torre A - 12º andar, sl. 1203  
Brasília - DF CEP: 70308-200  
Phone: +55 61 2106 -6600 Fax: +55 21 2262- 4247

Founded in 1972, Veirano Advogados is one of the leading and most renowned Brazilian business law firms, focused on developing tailored solutions for multinational companies operating in strategic sectors of the economy.

With a diverse team of over 600 people, including 250 lawyers working in an integrated fashion, we handle both routine and complex multidisciplinary cases that require the coordinated talents of professionals with diverse areas of expertise. Our lawyers are recruited from the country's universities and many are specialists with international education and practical skills gained in prominent law

firms in the United States, Europe and Asia, as well as extensive experience in cross-border transactions.

#### **VOLVO CAR BRASIL**

Rua Surubim, 577, 7º e 10º andares, cjs. 71/101, 102 e 103  
São Paulo – SP CEP: 04571-050  
Phone: +55 11 2348-6650 / +55 11 2348-6666  
E-mail: [mktbr@volvocars.com](mailto:mktbr@volvocars.com)  
[www.volvocars.com/br](http://www.volvocars.com/br)

Volvo Cars was founded in 1927 and it is one of the most well-known and respected car brands in the world. Volvo Cars aims to provide customers with the Freedom to Move in a personal, sustainable and safe way. This purpose is reflected into a number of business ambitions: for example, by the middle of this decade it aims for half of its global sales to be fully electric cars. Volvo Cars is also committed to an ongoing reduction of its carbon footprint, with the ambition to be a climate-neutral company by 2040.

#### **VOLVO GROUP – AMÉRICA LATINA**

Avenida Juscelino Kubitschek de Oliveira, 2600  
Cidade Industrial Curitiba – PR CEP: 81260-900  
Phone: +55 41 3317- 8111 / 0800 41 1050  
[www.volvo.com.br](http://www.volvo.com.br)

Volvo Group Latin America is in charge of the brand's businesses in Latin America. Its headquarters are located in Curitiba, where it has a large production plant of trucks, buses chassis, cabs, engines and gearboxes. The subsidiary also has another unit in Pederneiras, where construction equipments are manufactured.

#### **WEBROCK VENTURES**

Rua Pais Leme, 215, sala 2806  
São Paulo – SP CEP: 05424-150

Stockholm  
Stora Nygatan 41  
SE - 111 27 Stockholm Sweden

## **Grupo Stefanini.**

### **Atuação global orientada para soluções de Transformação, Inovação e TI.**

Cocriamos soluções para um futuro melhor, e somos aliados do negócio dos nossos clientes. Juntos conseguimos identificar e desenvolver novas lógicas e resultados a partir de um processo colaborativo e de alto valor.

Contamos com uma diversidade de empresas em nosso ecossistema, que nos permite gerar inovação em diferentes setores do mercado a partir de aceleradores tecnológicos.

Oferecemos soluções em diferentes áreas, entre elas:

- **TECHNOLOGY • BANKING •**
- **ANALYTICS & AI • INDUSTRY**
- **DIGITAL MARKETING**

Acesse nosso site e saiba mais:  
[www.stefanini.com](http://www.stefanini.com)

Scaneie o QR Code  
e acesse nossos Trends:



Phone: +46 70 713 81 00  
E-mail: [contato@webrockventures.com](mailto:contato@webrockventures.com)  
<http://webrockventures.com/>

Webrock is an investment company that generates shareholder value by creating joint ventures with Swedish-based technology companies to build and develop new, successful companies in Brazil. Using our understanding and experience of doing business in the country, we provide a unique operational expertise that ensures our companies grow and prosper.

With proven business models serving as blueprints, the joint ventures benefit immediately from the Swedish JV-partner's technology, know-how and experience, allowing us to build companies at an accelerated pace with less risk.

## WOLFFISH

## MEMBER DIRECTORY 2020 COLLABORATORS

**Jonas Lindström** - [jonas@swedcham.com.br](mailto:jonas@swedcham.com.br)  
Swedcham Managing Director

**Viviane Ringbäck** - [eventos@swedcham.com.br](mailto:eventos@swedcham.com.br)  
Events Manager

**Edson Borba** - [edson@edsonborba.com.br](mailto:edson@edsonborba.com.br)  
Layout and Graphic Design





# DESENVOLVIMENTO DE PRODUTOS COM BASE NO COMPORTAMENTO HUMANO.

*Nós combinamos tecnologia, utilidade e design de novas maneiras, de conceitos criativos a sistemas de produção e soluções de informação digital, sempre voltado para o usuário final, porque a experiência do usuário é a verdadeira evidência da qualidade e, portanto, é crucial para todos os produtos e organizações.*



## Os primeiros veículos limpa-neve do mundo.

Em breve, veículos limpa-neve em aeroportos serão autônomos. Pela primeira vez, limpadores de neves autônomos, com 20 metros de comprimento e 5,5 metros de largura, limpam a neve na pista de um aeroporto. Esse projeto, que é conhecido como Yeti e usa tecnologia desenvolvida pela Semcon, visa aumentar a eficiência e reduzir os atrasos nos aeroportos.



## Apresentamos Tork PeakServe®.

Tork PeakServe® está disponível no tamanho standard, permitindo atender às necessidades de toda a instalação do seu cliente com o mesmo refil.



Tork PeakServe®  
SKU. 0801552500



Tork PeakServe® Refil  
SKU. 0805100585



### Principais atributos:

- **Alta capacidade** – acima de 2100 toalhas
- **Recarga em uso** – reabasteça quando quiser
- **Rápido e fácil de abastecer** – 2x mais rápido
- **Distribuição rápida** – folhas saem em 3 segundos
- **Toalhas contínuas** – conectadas entre pacotes
- **Pacotes comprimidos** – mais papel em menos espaço



Prepare-se para momentos críticos com Tork PeakServe®

A maior capacidade do mercado\* com pacotes que são compactados em

# 50%

O sistema **Contínuo™** de toalhas Tork PeakServe® usa pacotes comprimidos para oferecer a **maior capacidade do mercado**, evitando assim o desabastecimento em horários de pico. Combinado à facilidade de uso, o sistema contínuo de Tork PeakServe® permite:



**Otimizar** o tempo das equipes de limpeza



**Agilizar** o fluxo nos ambientes



**Reduzir** espaço de armazenagem

\*Comparado à maior toalha rolo do concorrente na Europa e América do Norte.



[swedcham.com.br](http://swedcham.com.br)